

COMCOEPP

Engineering Plastic Products

Catalogue: Semi-Finished Products

Premium plastics of the highest quality.



SHEETS



ROUND BARS



TUBES



FINISHED PARTS

Better solutions, better relationships

We produce plastic stock shapes and engineer tailor made solutions.

COMCO EPP – Engineering Plastic Products is your expert partner for thermoplastic and thermosetting plastics. – with 40 years of experience.

At our production facilities in Hallein near Salzburg (Austria), Fachbach near Koblenz (Germany), Seoul (South Korea) and Dubai (United Arab Emirates), we draw on experience reaching back to the late 1970s (under the former company name Mertl Kunststoffe und Comco Plastik) to manufacture standard and custom-made semi-finished products, moulded castings and finished parts.

WE PRODUCE:

- Sheets and blanks
- Round bars and segments
- Blocks, discs and tubes
- Moulded parts
- Finished parts according to your drawings

Our in-house CNC centres are dedicated to the machining production of customer-specific finished parts in thermoplastic and thermosetting plastics. Whether individual parts or entire production runs: you can rely on consistently high quality.

Our semi-finished products centre supplies you with the products and materials you will find in these pages.



Our company is certified according to ISO 9001:2015 and ISO 14001:2015.



PA6C	4	Grey
POM-C	26	Yellow
PET	30	Purple
PEEK	32	Orange
PTFE	42	Dark Blue
PVDF	46	Pinkish-Grey
ETFE	48	Magenta
PA6 FR-V0	50	Orange
PA6.6	52	Purple
PE	56	Light Green
ABS	64	Green
PEI	66	Red
PPSU	68	Dark Grey
PSU	71	Brown
POLYIMIDE	73	Yellow

PA6C

Product Information



PA6C

Polyamide 6 cast (PA 6/c) is a universal material for mechanical engineering applications. It features high mechanical strength combined with sufficient toughness and very good machinability. Its properties can be optimised for specific applications by adding other materials. The casting process allows for a wide range of shapes.

Application areas for PA6C:

– PA6C is used for various types of pulleys, bearings, rope sheaves and gear wheels.

Characteristics:

- Excellent mechanical properties
- High chemical resistance
- High wear resistance
- Good machinability

Please note: We can produce various other formats on request.

PA6C

Product Information

PA6C variants

PA6C natural (ivory)

Our premium-quality polyamide 6 cast in natural (ivory) with prompt availability. The universal material for general structural parts in plant and mechanical engineering. PA6C has very good antifriction properties and good resistance to gamma and X-rays.

Colour: natural (ivory)

Round bars / Discs: Ø 50–2100 mm

Sheets (thicknesses): 10–100 mm

Blocks (thicknesses): 110–500 mm

Tubes / Rings: OD Ø 50–2100 mm



PA6C MO black

This variant exhibits improved crystallisation and self-lubrication thanks to the addition of molybdenum sulphides. The hardness is increased and at the same time the general mechanical, frictional and wear behaviour is improved. The material is produced in black.

Colour: black

Round bars / Discs: Ø 50–2100 mm

Sheets (thicknesses): 10–100 mm

Blocks (thicknesses): 110–500 mm

Tubes / Rings: OD Ø 50–2100 mm



PA6C Colour

Our premium-quality polyamide 6 cast specially dyed for your application. PA6C is available in red, yellow, green and blue. Further colours available on request.

Colours: red, yellow, green, blue

Round bars / Discs: Ø 100–2100 mm

Sheets (thicknesses): 20–100 mm

Blocks (thicknesses): 110–500 mm

Tubes / Rings: OD Ø 50–2100 mm



PA6C MoS₂ anthracite - black

PA6C MoS₂ is modified by the addition of molybdenum disulfide (MoS₂). The hardness is increased and at the same time the general mechanical properties and the friction and wear behavior are improved. The material is produced in the color anthracite - black.

Colours: anthracite - black

Round bars / Discs: Ø 50–2100 mm

Sheets (thicknesses): 10–100 mm

Blocks (thicknesses): 110–500 mm

Tubes / Rings: OD Ø 50–2100 mm



PA6C

Product Information

PA6C OL

PA6C OL is modified with an incorporated liquid lubricant, which is distributed in the material in microscopically small droplets. This material is ideal when the stick-slip effect is to be improved. This material is perfectly suited for slow-moving, dry-running sliding elements. Applications include bearing bushings, guides and curve guides. PA6C OL is available in yellow and black as standard, and in other colours on request.

Colours: yellow, black

Round bars / Discs: Ø 50–2100 mm

Sheets (thicknesses): 10–100 mm

Blocks (thicknesses): 110–500 mm

Tubes / Rings: OD Ø 50–2100 mm



PA6C Wax

The wax-modified polyamide 6 cast is characterised by better antifriction properties than the unfilled type. Applications include sliding elements and guide pieces, as well as sliding strips of all kinds. PA6C WAX is available in grey.

Colour: grey

Round bars / Discs: Ø 100–2100 mm

Sheets (thicknesses): 20–100 mm

Blocks (thicknesses): 110–500 mm

Tubes / Rings: OD Ø 50–2100 mm



PA6C Mod. / Powerglide

This modified polyamide type was specially developed for structural parts where antifriction and wear properties are extremely important to ensure reliable operation over an extended period. Compared to metal, this construction material is characterised by lower weight. Powerglide also has better tribological properties than unfilled plastics. If the antifriction properties of PE 1000 are required, as well as the superior wear resistance and high mechanical strength of polyamide, Powerglide is the ideal material. Applications include sliding and bearing elements, wear strips and heavy-duty pulleys in all areas of mechanical engineering, crane construction and conveyor technology. Curve guides, toothed and sprocket wheels are further examples of applications. Powerglide is available in green as standard, and in other colours upon request.

Colour: green

Round bars / Discs: Ø 50–2100 mm

Sheets (thicknesses): 10–100 mm

Blocks (thicknesses): 110–500 mm

Tubes / Rings: OD Ø 50–2100 mm



PA6C

Product Information

PA6C Heat

Modified with a thermal-aging stabiliser, this material has excellent resistance to thermal influences under stress. The standard colour is blue.

Colour: blue

Round bars / Discs: Ø 100–2100 mm

Sheets (thicknesses): 20–100 mm

Blocks (thicknesses): 110–500 mm

Tubes / Rings: OD Ø 50–2100 mm



PA6C HIGH IMPACT

This polyamide, which is also produced by the pressureless casting process, is a blended product based on caprolactam (the raw material for PA6C) and Laurinlactam (the raw material for PA12C). Compared to pure PA6C, the material has a lower water absorption and higher toughness. Applications include gear wheels, inlet and outlet star wheels or track rollers. PA6C HIGH IMPACT is available in natural / yellowish colours.

Colours: natural / yellow

Round bars / Discs: Ø 100–2100 mm

Sheets (thicknesses): 20–100 mm

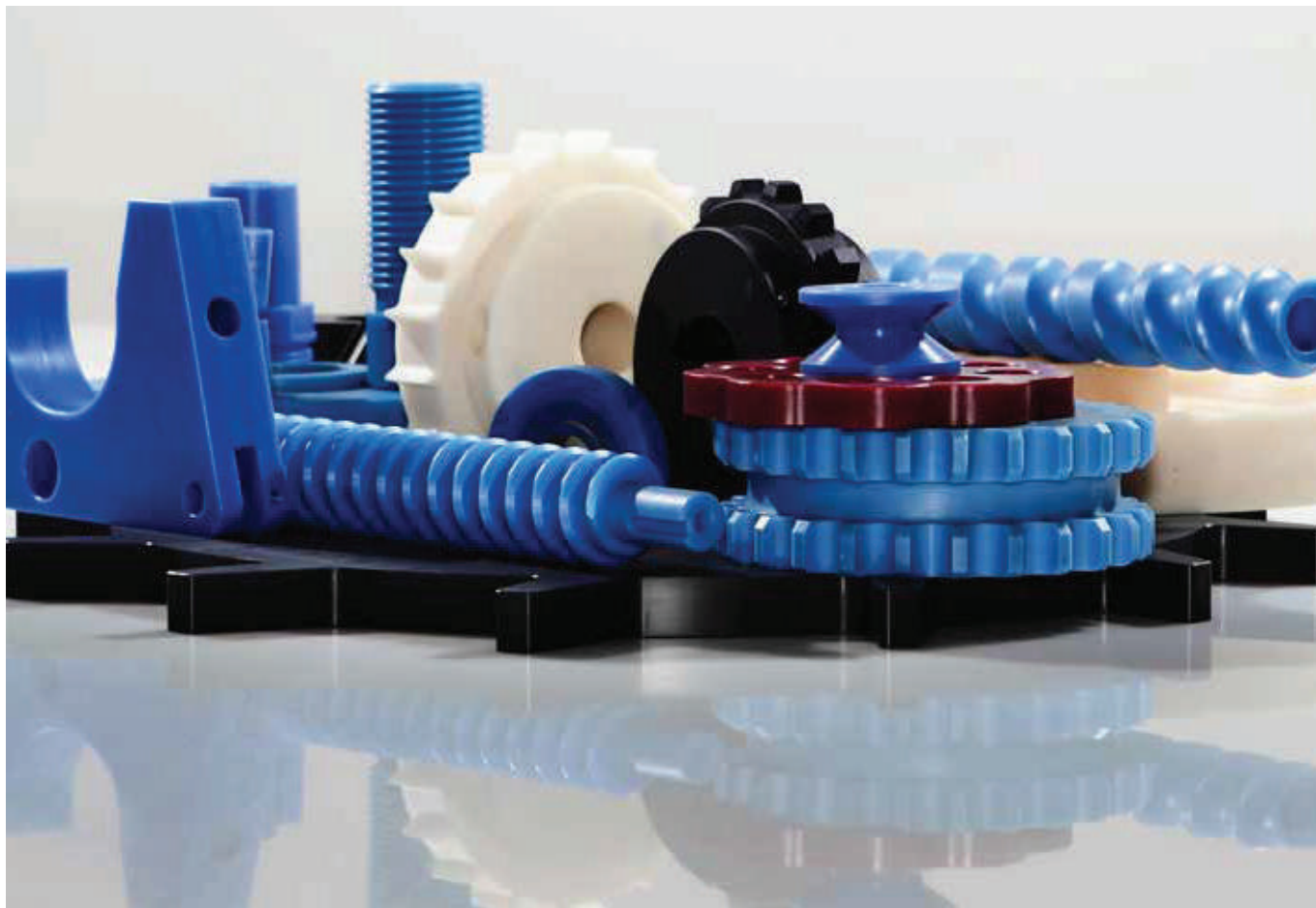
Blocks (thicknesses): 110–500 mm

Tubes / Rings: OD Ø 50–2100 mm



PA6C

Product Information



The dimensions of our standard sheet formats are 2000 × 1000 und 3050 × 1220 mm.
However, we can produce individual formats especially for you. Talk to us!

PA6C

Product Charts



Sheets

SHEETS PA6C	Thickness mm	Weight kg/item	Availability
2000 x 1000 mm	5	13.50	S
	6	16.30	S
	8	21.00	S
	10	25.80	S
	12	31.40	S
	15	37.70	S
	20	51.00	S
	25	63.00	S
	30	75.20	S
	35	87.60	S
	40	101.00	S
	45	112.00	S
	50	124.00	S
	55	137.00	S
	60	149.00	S
	65	162.00	S
70	174.00	S	
75	185.00	S	
80	198.00	S	
85	210.00	S	
90	222.00	S	
95	235.00	S	
100	246.00	S	
110	270.60	S	
120	295.20	S	

SHEETS PA6C	Thickness mm	Weight kg/item	Availability
1000 x 1000 mm	110	138.80	S
	115	145.10	S
	120	151.40	S
	125	157.70	S
	130	164.10	S
	140	176.70	S
	150	189.90	S
	160	201.90	S

SHEETS PA6C	Thickness mm	Weight kg/item	Availability
3050 x 1220 mm	8	37.68	S
	10	47.10	S
	12	56.52	S
	15	70.65	S
	20	94.20	S
	25	116.40	S
	30	141.20	S
	35	165.20	S
	40	187.20	S
	45	210.00	S
	50	231.60	S
	55	254.90	S
	60	276.00	S
	70	325.00	S
80	370.00	S	
90	413.10	S	
100	456.00	S	

SHEETS PA6	Thickness mm	Weight kg/item	Availability
2000 x 1000 mm	1.5	4.35	Calendered Standard
	2	5.80	Calendered Standard
	3	8.70	Calendered Standard
	4	11.60	Calendered Standard
	5	14.50	Calendered Standard

Thickness tolerances according to
DIN EN 15860:

Tolerances for length - 0 / +3%

Tolerances for width +5 / +25 mm

Average production weights.

Blocks and special formats possible.

For other dimensions, please contact us directly!



PA6C

Product Charts

Round Bars



ROUND BARS PA6C	Ø mm	weight kg/item L = 1000 mm	Availability
	40	1.58	S
	45	2.35	S
	50	2.50	S
	55	2.90	S
	60	3.50	S
	65	4.10	S
	70	4.70	S
	75	5.50	S
	80	6.20	S
	85	7.00	S
	90	7.80	S
	95	8.70	S
	100	9.60	S
	105	10.80	S
	110	11.80	S
	115	12.60	S
	120	13.70	S
	125	15.40	S
	130	16.70	S
	140	18.90	S
	150	21.60	S
	160	24.80	S
	170	27.70	S
	180	31.70	S
	190	35.00	S
	200	38.50	S
	210	42.60	S
	220	46.50	MTO
	225	48.30	MTO
	230	51.00	S
	240	55.80	MTO
	250	60.20	S
	260	66.20	MTO
	270	71.60	MTO
	280	76.60	S
	290	81.90	MTO
	300	88.30	S
	310	93.50	MTO
	325	103.80	MTO
	330	104.60	MTO
	340	112.70	MTO
	350	119.90	MTO

ROUND BARS PA6C	Ø mm	weight kg/item L = 1000 mm	Availability
	360	125.30	MTO
	370	131.30	MTO
	380	138.70	MTO
	400	154.90	MTO
	410	161.70	MTO
	420	169.60	MTO
	425	175.90	MTO
	430	177.50	MTO
	440	185.70	MTO
	450	195.90	MTO
	460	202.60	MTO
	470	211.40	MTO
	475	216.90	MTO
	480	220.30	MTO
	490	229.40	MTO
	500	241.70	MTO
	525	267.90	MTO
	550	294.40	MTO
	575	320.10	MTO
	600	349.00	MTO

ROUND BARS PA6	Ø mm	weight kg/item L = 3000 mm	Availability
	10	0.30	Extruded Standard
	20	1.17	Extruded Standard
	30	2.67	Extruded Standard

Diameter tolerances according to DIN EN 15860:

Tolerances for length -0 / +3%.

Average production weights.

Round bars and discs possible in up to 2100 mm diameter.

For further Dimensions, please contact us directly!

Colours:

Natural, black

Other colours available
on request



PA6C Tolerance Chart

Tubes



TUBES PA6C	Ø mm	Tolerance mm	
		AD	ID
	50 - 115	+2.0 / +5.0	-2.0 / -5.0
	120 - 150	+2.0 / +7.0	-2.0 / -7.0
	160 - 180	+2.0 / +8.0	-2.0 / -8.0
	190 - 220	+2.0 / +9.0	-2.0 / -9.0
	230 - 250	+3.0 / +10.0	-3.0 / -10.0
	260 - 300	+3.0 / +12.0	-3.0 / -12.0
	310 - 400	+3.0 / +14.0	-3.0 / -14.0
	410 - 500	+3.0 / +16.0	-3.0 / -16.0
	505 - 750	+5.0 / +20.0	-5.0 / -20.0
	750 - 1000	+5.0 / +25.0	-5.0 / -25.0
	1000 - 1250	+6.0 / +30.0	-6.0 / -30.0
	1250 - 1500	+6.0 / +40.0	-6.0 / -40.0
	1500 - 2000	+10.0 / + 50.0	-10.0 / -50.0
	> 2000	+15.0 / +60.0	-15.0 / -60.0



Here you will find our extensive range of cast polyamide pipes. Thanks to our large range of moulds, we can produce not only the standard dimensions, but also custom lengths. In addition, the inside diameter can be adjusted according to your needs. Blanks over 1250 mm must be requested separately, as they are produced according to your individual needs. Rings are available up to an outer diameter of 2100 mm.

If required, we can produce tubes on short notice and without a minimum order.

For modified pipes, however, we recommend prior enquiry, since a smaller minimum order may apply. Pipes with a length of over 2000 mm are also available on request.

PA6C

Product Charts

Tubes



TUBES PA6C		Ø mm									
ØD Ød	50	55	60	65	70	75	80	85	90	95	100
25	6.8	8.3	10.5	11.8							
30	6.1	7.6	9.8	11.1	13.9	15.2	17.9				
35	5.3	6.8	9.0	10.3	13.0	14.5	17.0	19.9	21.6	25.1	
40	4.3	5.9	8.1	9.3	12.1	13.6	16.2	18.9	20.7	24.1	26.3
45		4.8	7.0	8.2	11.0	12.5	15.1	18.0	19.6	23.0	25.2
50			5.7	7.0	9.8	11.2	13.9	16.8	18.5	21.8	24.0
55				5.6	8.4	9.9	12.5	15.4	17.2	20.6	22.6
60					6.9	8.3	11.0	13.9	15.6	19.1	21.3
65						6.7	9.4	12.2	14.0	17.4	19.7
70							7.6	10.4	12.2	15.6	17.9
75								8.5	10.2	13.7	15.9
80									8.2	11.6	13.8
85										9.4	11.6
90											9.3

TUBES PA6C		Ø mm										
ØD Ød	105	110	115	120	125	130	140	150	160	170	180	190
40	29.8	32.5										
45	28.7	31.5	34.3	40.5								
50	27.5	30.2	33.1	39.3	42.5	44.7						
55	26.1	28.8	31.7	38.0	41.2	43.3	52.5	61.1				
60	24.6	27.3	30.2	36.5	39.7	41.8	51.0	59.6	69.2			
65	23.2	25.7	28.5	34.9	38.0	40.2	49.4	58.0	67.6	75.3		
70	21.4	24.1	26.7	33.1	36.3	38.4	47.6	56.2	65.8	74.2	83.3	95.4
75	19.4	22.2	25.1	31.2	34.4	36.5	45.7	54.3	64.0	72.3	81.4	93.5
80	17.4	20.1	23.0	29.5	32.3	34.5	43.7	52.3	61.9	70.3	80.1	91.5
85	15.1	17.9	20.8	27.3	30.5	32.3	41.5	50.1	59.8	68.2	78.0	89.4
90	12.8	15.5	18.4	24.9	28.1	30.3	39.1	47.8	57.5	65.9	75.7	87.9
95	10.3	13.0	15.9	22.5	25.7	27.8	36.7	45.3	55.0	63.4	73.2	85.5
100		10.4	13.3	19.9	23.0	25.2	34.5	42.7	52.5	60.8	70.6	82.9
105			10.5	17.1	20.3	22.5	31.7	40.0	49.7	58.1	67.9	80.2

Data: weight in kg for D/d x 1000 mm



PA6C

Product Charts

Tubes



TUBES PA6C		Ø mm							
ØD Ød	120	125	130	140	150	160	170	180	190
110	14.2	17.4	19.6	28.8	37.5	46.9	55.3	65.1	77.3
115		14.4	16.6	25.8	34.5	43.9	52.3	62.1	74.4
120			13.4	22.6	31.3	41.3	49.1	58.9	71.2
125				19.3	28.0	38.0	45.8	55.7	68.0
130				15.8	24.5	34.5	43.0	52.2	64.6
135					21.0	31.0	39.4	48.7	61.0
140					17.2	27.3	35.7	45.6	57.3
145						23.4	31.9	41.7	53.5
150						19.4	27.9	37.7	50.2
155							23.7	33.6	46.1
160							19.5	29.3	41.9
165								24.9	37.5
170								20.4	32.9
175									28.2
180									23.4



TUBES PA6C		Ø mm					
ØD Ød	200	210	220	230	240	250	
75	104.7						
80	102.7	114.5	128.7				
85	100.6	112.3	126.5	139.2			
90	98.3	110.1	124.3	136.9	150.4		
95	95.9	107.6	121.9	134.5	148.0	159.4	
100	94.2	105.1	119.3	132.0	145.5	159.6	
105	91.5	102.4	116.6	129.3	142.8	156.9	
110	88.6	100.5	113.8	126.5	140.0	154.1	
115	85.7	97.5	110.8	123.6	137.1	151.1	
120	82.5	94.4	108.7	120.5	134.0	148.0	
125	79.3	91.1	105.4	117.2	130.7	144.8	
130	75.9	87.7	102.0	115.0	127.4	141.4	
135	72.3	84.2	98.5	111.4	123.8	137.9	
140	68.6	80.5	94.8	107.8	121.4	134.2	
145	64.8	76.7	91.0	104.0	117.6	130.5	
150	60.8	72.7	87.0	100.0	113.6	127.8	
155	56.7	68.6	82.9	95.9	109.5	123.7	

TUBES PA6C		Ø mm					
ØD Ød	200	210	220	230	240	250	
160	53.2	64.3	78.7	91.7	105.3	119.5	
165	48.8	60.0	74.3	87.4	101.0	115.1	
170	44.3	56.2	69.7	82.9	96.5	110.6	
175	39.6	51.6	65.1	78.2	91.8	106.0	
180	34.8	46.8	61.2	73.4	87.0	101.2	
185	29.9	41.8	56.2	68.5	82.1	96.3	
190	24.8	36.7	51.1	64.4	77.0	91.2	
195		31.5	45.9	59.2	71.8	86.0	
200		26.1	40.5	53.8	67.5	80.7	
205			35.0	48.3	62.0	75.2	
210			29.3	42.7	56.4	70.7	
215				36.9	50.6	64.9	
220				31.0	44.7	59.0	
225					38.6	52.9	
230					32.4	46.7	
235						40.4	
240						33.9	

Data: weight in kg for D/d × 3000 mm

PA6C

Product Charts



Tubes PA6C

TUBES PA6C		Ø mm														
ØD Ød	260	270	280	290	300	310	320	335	350	370	400	420	450	470	475	500
130	112.2	121.7	132.8													
135	109.8	119.3	130.4													
140	107.3	116.8	127.9	140.0	148.1											
145	104.7	114.2	125.3	137.4	145.5											
150	102.0	111.5	122.6	134.7	145.4	157.0	173.0	188.9	209.0	235.1						
155	99.2	108.7	119.8	131.9	142.7	154.3	170.2	186.1	206.3	232.3						
160	97.3	105.8	116.9	129.0	139.8	154.3	167.3	183.2	203.4	229.5						
165	94.3	102.9	113.9	126.1	136.8	151.3	164.4	180.3	200.5	226.5						
170	91.2	100.8	110.8	123.0	133.7	148.2	164.4	177.2	197.4	227.5	265.8					
175	88.0	97.6	107.7	119.8	130.5	145.1	161.2	174.1	194.3	224.4	262.7					
180	84.7	94.3	105.5	116.5	127.2	141.8	158.0	170.9	191.0	221.2	259.4	296.3				
185	81.3	91.0	102.1	113.2	123.9	138.5	154.6	170.8	187.7	217.8	256.1	293.0				
190	77.8	87.5	98.6	110.9	120.4	135.0	151.2	167.3	184.3	214.4	252.7	289.6	338.8			
195	74.3	83.9	95.1	107.3	116.8	131.5	147.6	163.8	180.8	210.9	249.2	286.1	335.4			
200	70.6	80.2	91.4	103.6	114.4	127.8	144.0	160.1	180.6	207.2	250.2	282.6	331.8	371.3	375.8	
205	66.8	76.5	87.6	99.9	110.7	124.1	140.3	156.4	176.9	203.5	246.5	278.9	328.1	367.7	372.1	
210	63.0	72.6	83.8	96.0	106.8	121.6	136.4	152.6	173.1	199.7	242.7	275.1	324.4	363.9	368.3	420.2
215	59.0	68.6	79.8	92.0	102.8	117.7	132.5	148.6	169.1	195.8	238.8	271.3	320.5	360.1	364.5	416.3
220	55.8	64.6	75.7	88.0	98.8	113.6	129.9	144.6	165.1	195.7	234.7	272.4	316.6	356.1	360.5	412.3
225	51.7	60.4	71.6	83.8	94.6	109.5	125.8	140.5	161.0	191.6	230.6	268.3	312.5	352.1	356.5	408.3
230	47.4	57.1	67.3	79.6	90.4	105.3	121.5	136.3	156.8	187.3	226.4	264.2	308.4	347.9	352.3	404.2
235	43.0	52.8	63.0	75.2	86.0	100.9	117.2	133.5	152.4	183.0	222.2	259.9	304.1	343.7	348.1	399.9
240	38.6	48.3	59.5	70.8	81.6	96.5	112.8	129.1	148.0	178.6	217.8	255.5	299.8	339.3	343.8	395.6
245	34.0	43.7	55.0	66.2	77.0	92.0	108.3	124.5	143.5	174.1	213.3	251.1	295.4	334.9	339.3	391.2
250	29.4	39.1	50.3	62.7	72.4	87.4	103.6	119.9	140.6	169.5	213.1	246.5	296.6	330.4	334.8	386.6
255		34.4	45.6	57.9	67.7	82.6	98.9	115.2	135.9	164.8	208.4	241.9	291.9	325.8	330.2	382.0
260		29.5	40.8	53.1	64.0	77.8	94.1	110.4	131.0	160.0	203.6	237.2	287.2	321.0	325.5	377.3
265			35.8	48.1	59.0	72.9	89.2	105.5	126.1	155.1	198.7	232.3	282.3	316.2	320.6	372.5
270			30.8	43.1	54.0	69.1	84.2	100.5	121.1	152.0	193.7	232.3	277.4	317.6	315.7	367.6
275				38.0	48.9	64.0	79.1	95.4	116.0	146.9	188.6	227.2	272.4	312.5	317.0	362.6
280				32.7	43.6	58.8	75.2	90.2	110.8	141.7	183.5	222.1	267.3	307.4	311.9	357.5
285					38.3	53.5	69.9	84.9	105.5	136.4	178.2	216.8	262.0	302.2	306.7	352.3
290					32.9	48.1	64.5	79.5	100.1	131.0	172.8	211.5	256.7	296.9	301.4	347.0
295						42.6	59.0	75.4	94.7	125.5	167.3	206.1	251.3	291.5	295.9	341.6
300						37.0	53.4	69.8	89.1	119.9	163.9	200.5	251.3	286.0	290.4	343.1
305							47.7	64.1	83.4	114.2	158.2	194.9	245.7	280.4	284.8	337.5
310							41.9	58.3	79.1	108.4	152.4	189.2	240.0	274.7	279.1	331.8
315								52.4	73.2	102.6	146.5	183.3	234.1	268.9	273.3	326.0
320								46.4	67.2	96.6	140.6	179.7	228.2	269.0	267.4	320.1
325								40.3	61.2	90.5	134.5	173.7	222.2	263.0	267.5	314.1
330									55.0	86.0	128.3	167.6	216.1	256.9	261.4	308.0

Data: weight in kg for
D/d × 2000 mm

PA6C

Product Charts

Tubes



TUBES PA6C		Ø mm						
ØD Ød	350	370	400	420	450	470	475	500
335	48.7	79.8	122.1	161.3	209.9	250.7	255.2	301.8
340	42.3	73.4	115.7	155.0	203.6	244.3	248.9	295.6
345		66.9	109.2	148.6	197.1	237.9	242.5	289.2
350		60.3	102.7	142.1	193.3	231.4	236.0	289.5
355		53.7	96.0	135.5	186.7	224.8	229.4	282.9
360		46.9	91.2	128.8	179.9	218.1	222.7	276.2
365			84.4	121.9	173.1	211.4	215.9	269.4
370			77.4	115.0	166.2	207.3	209.0	262.5
375			70.3	108.0	159.2	200.3	204.9	255.5
380			63.2	103.1	152.1	193.2	197.8	248.4
385			55.9	95.9	144.9	186.0	190.6	241.2
390			48.6	88.6	137.6	178.8	183.3	234.0
395				81.1	130.3	171.4	175.9	226.6
400				73.6	122.8	163.9	168.5	222.3
405				66.0	115.2	156.3	160.9	214.8
410				58.3	109.9	148.6	153.2	207.1
415					102.1	140.8	145.4	199.3
420					94.3	133.0	137.6	191.4
425					86.3	125.0	129.6	183.5
430					78.2	119.6	121.5	175.4
435					70.0	111.4	116.0	167.2
440					61.7	103.1	107.8	159.0
445						94.8	99.4	150.6
450						86.3	90.9	142.2
455						77.7	82.3	133.6
460						69.0	73.7	128.0
465							64.9	119.2
470								110.3
475								101.4
480								92.3
485								83.2
490								73.9

Data: weight in kg for D/d × 2000 mm

TUBES PA6C		Ø mm						
ØD Ød	525	550	575	600	625	650	675	
190	241.5							
195	239.8							
200	238.1	264.9						
205	236.3	263.1						
210	234.4	261.3	287.2					
215	232.6	259.4	285.4					
220	230.6	257.5	283.4	311.6				
225	228.7	255.5	281.5	309.6				
230	226.6	253.5	279.4	307.6	339.2			
235	224.6	251.4	277.4	305.5	337.2	366.6		
240	222.4	249.3	275.2	303.4	335.0	364.4		
245	220.3	247.1	273.1	301.2	332.9	362.3	395.2	
250	218.1	244.9	270.9	299.0	330.7	360.1	393.0	
255	215.8	242.6	268.6	296.8	328.4	357.8	390.8	
260	213.5	240.3	266.3	294.5	326.1	355.5	388.5	
265	211.1	238.0	263.9	292.1	323.7	353.1	386.1	
270	208.7	235.6	261.5	289.7	321.3	350.7	383.7	
275	206.3	233.1	259.1	287.3	318.9	348.3	381.3	
280	203.8	230.6	256.6	284.8	316.4	345.8	378.8	
285	201.3	228.1	254.1	282.2	313.8	343.2	376.2	
290	198.7	225.5	251.5	279.6	311.3	340.7	373.6	
295	196.0	222.9	248.8	277.0	308.6	338.0	371.0	
300	193.3	220.2	246.1	274.3	305.9	335.3	368.3	
305	190.6	217.4	243.4	271.6	303.2	332.6	365.6	
310	187.8	214.7	240.6	268.8	300.4	329.8	362.8	
315	185.0	211.8	237.8	266.0	297.6	327.0	360.0	
320	182.1	209.0	234.9	263.1	294.7	324.1	357.1	
325	183.0	206.0	232.0	260.2	291.8	321.2	354.2	
330	180.0	203.1	229.1	257.2	288.8	318.2	351.2	
335	177.0	200.1	226.0	254.2	285.8	315.2	348.2	
340	173.9	197.0	223.0	251.1	282.8	312.2	345.1	
345	170.8	193.9	219.9	248.0	279.7	309.1	342.0	
350	167.6	194.9	216.7	244.9	276.5	305.9	338.9	
355	164.4	191.7	213.5	241.7	273.3	302.7	335.7	
360	161.1	188.4	210.3	238.4	270.1	299.5	332.4	
365	157.8	185.1	207.0	235.1	266.8	296.2	329.1	
370	154.5	181.7	203.6	231.8	263.4	292.8	325.8	
375	154.7	178.3	204.7	228.4	260.0	289.4	322.4	
380	151.2	174.8	201.2	225.0	256.6	286.0	319.0	

Data: weight in kg for D/d × 1000 mm



Tubes

TUBES PA6C		Ø mm					
Ød \ ØD	525	550	575	600	625	650	675
385	147.7	171.3	197.7	221.5	253.1	282.5	315.5
390	144.2	167.8	194.2	217.9	249.6	279.0	311.9
395	140.5	164.2	190.6	214.4	246.0	275.4	308.4
400	136.9	164.5	186.9	215.5	242.4	271.8	304.7
405	133.2	160.8	183.2	211.8	238.7	268.1	301.1
410	129.4	157.1	179.5	208.1	235.0	264.4	297.4
415	125.6	153.3	175.7	204.3	231.2	260.6	293.6
420	121.7	149.4	171.9	200.5	227.4	256.8	289.8
425	119.6	145.5	172.3	196.6	228.7	252.9	285.9
430	115.6	141.6	168.4	192.7	224.8	249.0	282.0
435	111.6	137.6	164.4	188.7	220.8	245.1	278.0
440	107.6	133.5	160.3	184.7	216.8	241.1	274.0
445	103.5	129.4	156.2	180.6	212.7	237.0	270.0
450	99.3	127.2	152.1	181.1	208.6	238.5	265.9
455	95.1	123.0	147.9	177.0	204.5	234.3	261.8
460	90.9	118.8	143.7	172.7	200.2	230.1	257.6
465	86.6	114.5	139.4	168.4	196.0	225.8	253.3
470	82.3	110.1	135.1	164.1	191.7	221.5	249.0
475	77.9	105.8	132.8	159.7	192.4	217.2	250.7
480	73.4	101.3	128.3	155.3	187.9	212.8	246.3
485	70.6	96.8	123.8	150.8	183.5	208.3	241.8
490	66.0	92.3	119.3	146.3	179.0	203.8	237.3
495	61.4	87.7	114.7	141.7	174.4	199.3	232.8
500	56.8	83.1	110.1	139.4	169.8	200.1	228.2
505	52.1	78.4	105.4	134.7	165.1	195.4	223.6
510	47.4	75.5	100.7	130.0	160.4	190.7	218.9
515	42.6	70.7	95.9	125.2	155.6	186.0	214.1
520		65.9	91.1	120.4	150.8	181.2	209.4
525		61.0	86.2	115.5	148.4	176.3	210.3
530		56.1	81.3	110.6	143.5	171.4	205.4
535		51.1	78.3	105.6	138.5	166.5	200.5
540		46.1	73.3	100.6	133.5	161.5	195.5

TUBES PA6C		Ø mm				
Ød \ ØD	575	600	625	650	675	
545	68.2	95.6	128.5	156.4	190.4	
550	63.1	90.5	123.4	153.9	185.3	
555	57.9	85.3	118.2	148.8	180.2	
560	52.7	82.2	113.0	143.6	175.0	
565	47.5	77.0	107.8	138.3	169.8	
570		71.7	102.5	133.0	164.5	
575		66.3	97.1	127.7	162.0	
580		60.9	91.7	122.3	156.6	
585		55.4	88.6	116.9	151.1	
590		49.9	83.1	111.4	145.7	
595			77.5	105.9	140.1	
600			72.0	100.3	134.5	
605			66.3	94.6	128.9	
610			60.6	91.4	123.2	
615			54.9	85.7	117.5	
620				79.9	111.7	
625				74.1	105.9	
630				68.2	100.1	
635				62.2	96.8	
640				56.3	90.8	
645					84.8	
650					78.7	
655					72.6	
660					66.4	
665					60.2	

Data: weight in kg for D/d × 1000 mm

PA6C

Product Charts

Tubes



TUBES PA6C		Ø mm							
Ød \ ØD	700	725	750	775	800	825	850	875	900
255	423.7								
260	421.4								
265	419.0	450.5							
270	416.6	448.1							
275	414.2	445.6	483.5						
280	411.7	443.2	481.0	521.7					
285	409.2	440.6	478.5	519.2					
290	406.6	438.0	475.9	516.6	554.3				
295	403.9	435.4	473.3	514.0	551.7				
300	401.2	432.7	470.6	511.3	549.0	587.9			
305	398.5	430.0	467.9	508.6	546.3	585.2			
310	395.7	427.2	465.2	505.9	543.6	582.5	622.6		
315	392.9	424.4	462.4	503.1	540.8	579.7	619.8		
320	390.0	421.5	459.5	500.2	537.9	576.8	616.9	658.1	
325	387.1	418.6	456.6	497.3	535.0	573.9	614.0	655.3	
330	384.2	415.6	453.7	494.4	532.1	571.0	611.1	652.3	694.7
335	381.1	412.6	450.7	491.4	529.1	568.0	608.1	649.3	691.7
340	378.1	409.5	447.6	488.3	526.1	565.0	605.0	646.3	688.7
345	375.0	406.4	444.6	485.3	523.0	561.9	602.0	643.2	685.6
350	371.8	403.3	441.4	482.1	519.9	558.8	598.8	640.1	682.5
355	368.6	400.1	438.3	478.9	516.7	555.6	595.6	636.9	679.3
360	365.4	396.8	435.0	475.7	513.4	552.3	592.4	633.7	676.1
365	362.1	393.5	431.8	472.4	510.2	549.1	589.1	630.4	672.8
370	358.7	390.2	428.4	469.1	506.9	545.8	585.8	627.1	669.5
375	355.3	386.8	425.1	465.8	503.5	542.4	582.5	623.7	666.1
380	351.9	383.4	421.7	462.4	500.1	539.0	579.0	620.3	662.7
385	348.4	379.9	418.2	458.9	496.6	535.5	575.6	616.8	659.3
390	344.9	376.3	414.7	455.4	493.1	532.0	572.1	613.3	655.7
395	341.3	372.8	411.1	451.8	489.6	528.5	568.5	609.8	652.2
400	337.7	369.1	407.5	448.2	486.0	524.9	564.9	606.2	648.6
405	334.0	365.5	403.9	444.6	482.3	521.2	561.3	602.5	644.9
410	330.3	361.7	400.2	440.9	478.6	517.5	557.6	598.8	641.2
415	326.5	358.0	396.4	437.1	474.9	513.8	553.8	595.1	637.5
420	322.7	354.2	392.7	433.3	471.1	510.0	550.0	591.3	633.7
425	318.9	350.3	388.8	429.5	467.2	506.1	546.2	587.5	629.9
430	314.9	346.4	384.9	425.6	463.4	502.3	542.3	583.6	626.0
435	311.0	342.4	381.0	421.7	459.4	498.3	538.4	579.6	622.1
440	307.0	338.4	377.0	417.7	455.4	494.3	534.4	575.7	618.1
445	302.9	334.4	373.0	413.7	451.4	490.3	530.4	571.6	614.1

Data: weight in kg for D/d × 1000 mm

PA6C

Product Charts

Tubes



TUBES PA6C		Ø mm								
Ød	700	725	750	775	800	825	850	875	900	
450	298.8	330.3	368.9	409.6	447.3	486.2	526.3	567.6	610.0	
455	294.7	326.2	364.8	405.5	443.2	482.1	522.2	563.4	605.9	
460	290.5	322.0	360.6	401.3	439.1	478.0	518.0	559.3	601.7	
465	286.3	317.7	356.4	397.1	434.8	473.7	513.8	555.1	597.5	
470	282.0	313.4	352.2	392.9	430.6	469.5	509.6	550.8	593.2	
475	277.7	309.1	347.9	388.5	426.3	465.2	505.2	546.5	588.9	
480	273.3	304.7	343.5	384.2	421.9	460.8	500.9	542.1	584.6	
485	268.9	300.3	339.1	379.8	417.5	456.4	496.5	537.7	580.2	
490	264.4	295.8	334.6	375.3	413.1	452.0	492.0	533.3	575.7	
495	259.9	291.3	330.2	370.8	408.6	447.5	487.5	528.8	571.2	
500	261.7	286.7	325.6	366.3	404.0	442.9	483.0	524.2	566.7	
505	257.0	282.1	321.0	361.7	399.4	438.3	478.4	519.7	562.1	
510	252.3	277.5	316.4	357.1	394.8	433.7	473.8	515.0	557.4	
515	247.6	272.8	311.7	352.4	390.1	429.0	469.1	510.3	552.8	
520	242.8	268.0	307.0	347.7	385.4	424.3	464.4	505.6	548.0	
525	238.0	269.9	302.2	342.9	380.6	419.5	459.6	500.8	543.2	
530	233.1	265.1	297.4	338.1	375.8	414.7	454.8	496.0	538.4	
535	228.2	260.1	292.5	333.2	370.9	409.8	449.9	491.1	533.5	
540	223.2	255.2	287.6	328.3	366.0	404.9	445.0	486.2	528.6	
545	218.2	250.1	282.6	323.3	361.0	399.9	440.0	481.2	523.7	
550	219.3	245.1	284.8	318.3	356.0	394.9	435.0	476.2	518.6	
555	214.2	240.0	279.7	313.2	350.9	389.8	429.9	471.2	513.6	
560	209.0	234.8	274.6	308.1	345.8	384.7	424.8	466.1	508.5	
565	203.8	229.6	269.4	303.0	340.7	379.6	419.7	460.9	503.3	
570	198.5	224.4	264.1	297.8	335.5	374.4	414.4	455.7	498.1	
575	193.2	225.6	258.9	300.2	330.2	369.1	409.2	450.4	492.9	
580	187.8	220.2	253.5	294.9	324.9	363.8	403.9	445.1	487.6	
585	182.4	214.8	248.2	289.5	319.6	358.5	398.6	439.8	482.2	
590	176.9	209.3	242.7	284.1	314.2	353.1	393.2	434.4	476.8	
595	171.4	203.8	237.3	278.6	308.8	347.7	387.7	429.0	471.4	
600	168.8	198.3	238.8	273.1	311.4	342.2	382.2	423.5	465.9	
605	163.2	192.6	233.2	267.5	305.9	336.6	376.7	418.0	460.4	
610	157.5	187.0	227.5	261.9	300.2	331.1	371.1	412.4	454.8	
615	151.8	181.3	221.9	256.3	294.6	325.4	365.5	406.8	449.2	
620	146.0	175.5	216.1	250.6	288.9	319.8	359.8	401.1	443.5	
625	140.2	172.9	210.3	252.3	283.1	322.7	354.1	395.4	437.8	
630	134.3	167.0	204.5	246.5	277.3	316.9	348.3	389.6	432.0	
635	128.4	161.1	198.6	240.6	271.5	311.0	342.5	383.8	426.2	
640	122.4	155.1	192.7	234.7	265.6	305.1	336.7	377.9	420.3	



Data: weight in kg for D/d × 1000 mm

PA6C

Product Charts

Tubes



TUBES PA6C		∅ mm							
∅d \ ∅D	700	725	750	775	800	825	850	875	900
645	116.4	149.1	186.7	228.7	259.7	299.2	330.8	372.0	414.4
650	110.4	143.1	184.1	222.7	261.6	293.2	333.9	366.0	408.5
655	104.3	137.0	178.0	216.6	255.6	287.2	327.9	360.0	402.5
660	100.9	130.8	171.9	210.5	249.4	281.1	321.8	354.0	396.4
665	94.7	124.6	165.7	204.4	243.3	274.9	315.6	347.9	390.3
670	88.4	118.4	159.5	198.2	237.1	268.8	309.5	341.8	384.2
675	82.1	112.1	153.2	195.5	230.8	271.0	303.2	345.1	378.0
680	75.8	105.7	146.9	189.2	224.5	264.6	297.0	338.9	371.7
685	69.4	102.3	140.5	182.9	218.2	258.3	290.7	332.6	365.5
690	62.9	95.9	134.1	176.4	211.8	251.9	284.3	326.2	359.1
695		89.4	127.7	170.0	205.3	245.5	277.9	319.8	352.7
700		82.8	121.2	163.5	202.7	239.0	280.3	313.3	356.4
705		76.2	114.6	156.9	196.1	232.4	273.8	306.8	349.9
710		69.6	111.2	150.3	189.5	225.8	267.2	300.3	343.3
715		62.9	104.5	143.6	182.9	219.2	260.5	293.6	336.7
720			97.8	136.9	176.2	212.5	253.8	287.0	330.1
725			91.1	130.2	169.4	209.9	247.1	289.7	323.4
730			84.2	123.4	162.6	203.1	240.3	282.9	316.6
735			77.4	120.0	155.8	196.2	233.5	276.1	309.9
740			70.5	113.1	148.9	189.3	226.6	269.2	303.0
745				106.1	141.9	182.4	219.7	262.3	296.1
750				99.1	135.0	175.4	217.1	255.3	299.1
755				92.1	127.9	168.4	210.0	248.3	292.0
760				85.0	124.5	161.3	202.9	241.2	285.0
765				77.8	117.4	154.1	195.8	234.1	277.9

TUBES PA6C		∅ mm				
∅d \ ∅D	800	825	850	875	900	
770	110.2	147.0	188.6	226.9	270.7	
775	102.9	139.7	181.4	224.3	263.5	
780	95.6	132.5	174.1	217.0	256.2	
785	88.3	129.0	166.8	209.7	248.9	
790	80.9	121.6	159.4	202.3	241.6	
795		114.2	152.0	194.9	234.2	
800		106.7	144.6	187.4	231.5	
805		99.2	137.0	179.9	224.0	
810		91.6	133.6	172.4	216.5	
815		84.0	126.0	164.8	208.9	
820			118.3	157.1	201.2	
825			110.6	149.4	193.5	
830			102.8	141.6	185.7	
835			95.0	138.2	177.9	
840			87.1	130.3	170.1	
845				122.4	162.2	
850				114.5	154.3	
855				106.4	146.3	
860				98.4	142.8	
865				90.3	134.7	
870					126.6	
875					118.4	
880					110.1	
885					101.8	
890					93.5	

Data: weight in kg for D/d × 1000 mm



Tubes

TUBES PA6C		Ø mm													
Ød	925	950	975	1000	1025	1050	1075	1100	1125	1150	1175	1200	1225	1250	
335	735.3														
340	732.3														
345	729.2	774.0													
350	726.1	770.8													
355	722.9	767.7	813.6												
360	719.7	764.4	810.4												
365	716.4	761.2	807.1	856.2											
370	713.1	757.9	803.8	852.9											
375	709.7	754.5	800.4	849.6	901.6										
380	706.3	751.1	797.0	846.2	898.2	951.6									
385	702.8	747.6	793.6	842.7	894.8	948.2									
390	699.3	744.1	790.0	839.3	891.3	944.7	993.6								
395	695.8	740.5	786.5	835.7	887.8	941.2	990.0								
400	692.2	736.9	782.9	832.2	884.2	937.6	986.5	1040.4							
405	688.5	733.3	779.2	828.5	880.6	934.0	982.8	1036.8							
410	684.8	729.6	775.5	824.9	876.9	930.3	979.2	1033.1	1088.4						
415	681.1	725.9	771.8	821.2	873.2	926.6	975.5	1029.4	1084.6						
420	677.3	722.1	768.0	817.4	869.4	922.9	971.7	1025.7	1080.9	1135.3					
425	673.5	718.2	764.2	813.6	865.6	919.0	967.9	1021.8	1077.1	1131.5	1187.0				
430	669.6	714.3	760.3	809.7	861.8	915.2	964.0	1018.0	1073.2	1127.6	1183.1				
435	665.7	710.4	756.4	805.8	857.9	911.3	960.1	1014.1	1069.3	1123.7	1179.2	1231.6			
440	661.7	706.4	752.4	801.9	853.9	907.3	956.2	1010.1	1065.4	1119.7	1175.3	1227.6			
445	657.6	702.4	748.4	797.9	849.9	903.3	952.2	1006.1	1061.4	1115.7	1171.3	1223.6	1285.9		
450	653.6	698.3	744.3	793.8	845.9	899.3	948.1	1002.1	1057.3	1111.7	1167.3	1219.6	1281.9		
455	649.5	694.2	740.2	789.7	841.8	895.2	944.0	998.0	1053.2	1107.6	1163.2	1215.5	1277.8	1336.4	
460	645.3	690.1	736.0	785.6	837.7	891.1	939.9	993.9	1049.1	1103.5	1159.0	1211.3	1273.6	1332.3	
465	641.1	685.8	731.8	781.4	833.5	886.9	935.7	989.7	1044.9	1099.3	1154.8	1207.2	1269.5	1328.1	
470	636.8	681.6	727.5	777.2	829.2	882.6	931.5	985.4	1040.7	1095.1	1150.6	1202.9	1265.2	1323.9	
475	632.5	677.3	723.2	772.9	825.0	878.4	927.2	981.2	1036.4	1090.8	1146.3	1198.6	1260.9	1319.7	
480	628.1	672.9	718.9	768.6	820.6	874.0	922.9	976.8	1032.1	1086.4	1142.0	1194.3	1256.6	1315.4	
485	623.7	668.5	714.5	764.2	816.3	869.7	918.5	972.5	1027.7	1082.1	1137.6	1189.9	1252.2	1311.1	
490	619.3	664.1	710.0	759.8	811.8	865.2	914.1	968.0	1023.3	1077.7	1133.2	1185.5	1247.8	1306.7	
495	614.8	659.6	705.5	755.3	807.4	860.8	909.6	963.6	1018.8	1073.2	1128.7	1181.1	1243.4	1302.3	
500	610.3	655.0	701.0	750.8	802.9	856.3	905.1	959.1	1014.3	1068.7	1124.2	1176.5	1238.8	1297.8	
505	605.7	650.4	696.4	746.2	798.3	851.7	900.5	954.5	1009.7	1064.1	1119.7	1172.0	1234.3	1293.3	
510	601.0	645.8	691.7	741.6	793.7	847.1	895.9	949.9	1005.1	1059.5	1115.0	1167.4	1229.7	1288.8	
515	596.3	641.1	687.1	737.0	789.0	842.4	891.3	945.2	1000.5	1054.8	1110.4	1162.7	1225.0	1284.2	
520	591.6	636.4	682.3	732.3	784.3	837.7	886.6	940.5	995.8	1050.1	1105.7	1158.0	1220.3	1279.5	
525	586.8	631.6	677.5	727.5	779.6	833.0	881.8	935.8	991.0	1045.4	1100.9	1153.3	1215.6	1274.8	

Data: weight in kg for
D/d × 1000 mm

PA6C

Product Charts

Tubes



TUBES PA6C		Ø mm													
Ød	ØD	925	950	975	1000	1025	1050	1075	1100	1125	1150	1175	1200	1225	1250
530	582.0	626.8	672.7	722.7	774.8	828.2	877.0	931.0	986.2	1040.6	1096.1	1148.5	1210.8	1270.0	
535	577.1	621.9	667.8	717.9	769.9	823.3	872.2	926.1	981.4	1035.7	1091.3	1143.6	1205.9	1265.2	
540	572.2	617.0	662.9	713.0	765.0	818.4	867.3	921.2	976.5	1030.9	1086.4	1138.7	1201.0	1260.4	
545	567.2	612.0	658.0	708.1	760.1	813.5	862.3	916.3	971.5	1025.9	1081.5	1133.8	1196.1	1255.5	
550	562.2	607.0	652.9	703.1	755.1	808.5	857.4	911.3	966.5	1020.9	1076.5	1128.8	1191.1	1250.6	
555	557.2	601.9	647.9	698.0	750.1	803.5	852.3	906.3	961.5	1015.9	1071.4	1123.8	1186.1	1245.6	
560	552.1	596.8	642.8	693.0	745.0	798.4	847.2	901.2	956.4	1010.8	1066.4	1118.7	1181.0	1240.6	
565	546.9	591.7	637.6	687.8	739.9	793.3	842.1	896.1	951.3	1005.7	1061.2	1113.6	1175.9	1235.5	
570	541.7	586.5	632.4	682.7	734.7	788.1	836.9	890.9	946.1	1000.5	1056.1	1108.4	1170.7	1230.3	
575	536.5	581.2	627.2	677.4	729.5	782.9	831.7	885.7	940.9	995.3	1050.8	1103.2	1165.5	1225.2	
580	531.2	575.9	621.9	672.2	724.2	777.6	826.5	880.4	935.6	990.0	1045.6	1097.9	1160.2	1219.9	
585	525.8	570.6	616.5	666.8	718.9	772.3	821.1	875.1	930.3	984.7	1040.3	1092.6	1154.9	1214.7	
590	520.4	565.2	611.1	661.5	713.5	766.9	815.8	869.7	925.0	979.3	1034.9	1087.2	1149.5	1209.4	
595	515.0	559.8	605.7	656.1	708.1	761.5	810.4	864.3	919.6	973.9	1029.5	1081.8	1144.1	1204.0	
600	509.5	554.3	600.2	650.6	702.7	756.1	804.9	858.9	914.1	968.5	1024.0	1076.3	1138.7	1198.6	
605	504.0	548.7	594.7	645.1	697.2	750.6	799.4	853.4	908.6	963.0	1018.5	1070.8	1133.1	1193.1	
610	498.4	543.2	589.1	639.6	691.6	745.0	793.9	847.8	903.0	957.4	1013.0	1065.3	1127.6	1187.6	
615	492.8	537.5	583.5	634.0	686.0	739.4	788.3	842.2	897.4	951.8	1007.4	1059.7	1122.0	1182.1	
620	487.1	531.9	577.8	628.3	680.4	733.8	782.6	836.6	891.8	946.2	1001.7	1054.0	1116.4	1176.5	
625	481.4	526.1	572.1	622.6	674.7	728.1	776.9	830.9	886.1	940.5	996.0	1048.4	1110.7	1170.8	
630	475.6	520.4	566.3	616.9	668.9	722.3	771.2	825.1	880.4	934.7	990.3	1042.6	1104.9	1165.1	
635	469.8	514.6	560.5	611.1	663.1	716.6	765.4	819.4	874.6	929.0	984.5	1036.8	1099.1	1159.4	
640	463.9	508.7	554.6	605.3	657.3	710.7	759.6	813.5	868.8	923.1	978.7	1031.0	1093.3	1153.6	
645	458.0	502.8	548.7	599.4	651.4	704.8	753.7	807.6	862.9	917.2	972.8	1025.1	1087.4	1147.8	
650	452.1	496.8	542.8	593.5	645.5	698.9	747.8	801.7	856.9	911.3	966.9	1019.2	1081.5	1141.9	
655	446.1	490.8	536.8	587.5	639.5	692.9	741.8	795.7	851.0	905.3	960.9	1013.2	1075.5	1136.0	
660	440.0	484.8	530.7	581.5	633.5	686.9	735.8	789.7	844.9	899.3	954.9	1007.2	1069.5	1130.0	
665	433.9	478.7	524.6	575.4	627.4	680.8	729.7	783.6	838.9	893.3	948.8	1001.1	1063.4	1124.0	
670	427.8	472.5	518.5	569.3	621.3	674.7	723.6	777.5	832.8	887.1	942.7	995.0	1057.3	1117.9	
675	421.6	466.3	512.3	563.1	615.2	668.6	717.4	771.4	826.6	881.0	936.5	988.8	1051.1	1111.8	
680	415.3	460.1	506.0	556.9	609.0	662.4	711.2	765.2	820.4	874.8	930.3	982.6	1044.9	1105.6	
685	409.1	453.8	499.8	550.6	602.7	656.1	704.9	758.9	814.1	868.5	924.1	976.4	1038.7	1099.4	
690	402.7	447.5	493.4	544.3	596.4	649.8	698.6	752.6	807.8	862.2	917.8	970.1	1032.4	1093.2	
695	396.3	441.1	487.0	538.0	590.0	643.4	692.3	746.2	801.5	855.9	911.4	963.7	1026.0	1086.9	
700	389.9	434.7	480.6	531.6	583.6	637.0	685.9	739.8	795.1	849.5	905.0	957.3	1019.6	1080.5	
705	383.4	428.2	474.1	525.1	577.2	630.6	679.4	733.4	788.6	843.0	898.6	950.9	1013.2	1074.1	
710	376.9	421.7	467.6	518.7	570.7	624.1	672.9	726.9	782.1	836.5	892.1	944.4	1006.7	1067.7	
715	370.3	415.1	461.1	512.1	564.2	617.6	666.4	720.4	775.6	830.0	885.5	937.8	1000.1	1061.2	
720	363.7	408.5	454.4	505.5	557.6	611.0	659.8	713.8	769.0	823.4	878.9	931.3	993.6	1054.6	

Data: weight in kg for
D/d × 1000 mm

PA6C

Product Charts



Tubes

TUBES PA6C		Ø mm												
Ød	925	950	975	1000	1025	1050	1075	1100	1125	1150	1175	1200	1225	1250
725	367.7	401.8	447.8	498.9	550.9	604.4	653.2	707.1	762.4	816.8	872.3	924.6	986.9	1048.0
730	360.9	395.1	441.1	492.2	544.3	597.7	646.5	700.5	755.7	810.1	865.6	917.9	980.2	1041.4
735	354.1	388.4	434.3	485.5	537.5	590.9	639.8	693.7	749.0	803.3	858.9	911.2	973.5	1034.7
740	347.3	381.6	427.5	478.7	530.8	584.2	633.0	687.0	742.2	796.6	852.1	904.4	966.7	1028.0
745	340.4	374.7	420.7	471.9	523.9	577.3	626.2	680.1	735.4	789.7	845.3	897.6	959.9	1021.2
750	333.5	378.9	413.8	465.0	517.1	570.5	619.3	673.3	728.5	782.9	838.4	890.7	953.1	1014.4
755	326.5	372.0	406.8	458.1	510.1	563.6	612.4	666.4	721.6	776.0	831.5	883.8	946.1	1007.5
760	319.5	364.9	399.8	451.1	503.2	556.6	605.4	659.4	714.6	769.0	824.5	876.9	939.2	1000.6
765	312.4	357.9	392.8	444.1	496.2	549.6	598.4	652.4	707.6	762.0	817.5	869.9	932.2	993.7
770	305.3	350.7	385.7	437.1	489.1	542.5	591.4	645.3	700.6	754.9	810.5	862.8	925.1	986.6
775	308.5	343.6	390.2	430.0	482.0	535.4	584.3	638.2	693.4	747.8	803.4	855.7	918.0	979.6
780	301.2	336.3	383.0	422.8	474.9	528.3	577.1	631.1	686.3	740.7	796.2	848.5	910.8	972.5
785	293.9	329.1	375.7	415.6	467.7	521.1	569.9	623.9	679.1	733.5	789.0	841.3	903.6	965.3
790	286.6	321.8	368.4	408.4	460.4	513.8	562.7	616.6	671.9	726.2	781.8	834.1	896.4	958.1
795	279.2	314.4	361.1	401.1	453.1	506.5	555.4	609.3	664.6	718.9	774.5	826.8	889.1	950.9
800	271.7	317.9	353.7	406.0	445.8	499.2	548.0	602.0	657.2	711.6	767.1	819.5	881.8	943.6
805	264.2	310.4	346.2	398.5	438.4	491.8	540.6	594.6	649.8	704.2	759.8	812.1	874.4	936.3
810	256.7	302.9	338.7	391.1	431.0	484.4	533.2	587.2	642.4	696.8	752.3	804.6	866.9	928.9
815	249.1	295.3	331.2	383.5	423.5	476.9	525.7	579.7	634.9	689.3	744.8	797.2	859.5	921.4
820	241.5	287.6	323.6	376.0	416.0	469.4	518.2	572.2	627.4	681.8	737.3	789.6	851.9	914.0
825	238.8	279.9	327.3	368.4	421.2	461.8	510.6	564.6	619.8	674.2	729.7	782.1	844.4	906.4
830	231.1	272.2	319.6	360.7	413.6	454.2	503.0	557.0	612.2	666.6	722.1	774.4	836.7	898.8
835	223.3	264.4	311.8	353.0	405.9	446.5	495.3	549.3	604.5	658.9	714.4	766.8	829.1	891.2
840	215.4	256.6	304.0	345.2	398.1	438.8	487.6	541.6	596.8	651.2	706.7	759.1	821.4	883.6
845	207.5	248.7	296.1	337.4	390.3	431.0	479.8	533.8	589.0	643.4	699.0	751.3	813.6	875.8
850	199.6	246.1	288.2	341.6	382.4	436.7	472.0	526.0	581.2	635.6	691.2	743.5	805.8	868.1
855	191.6	238.1	280.2	333.6	374.5	428.8	464.2	518.1	573.4	627.7	683.3	735.6	797.9	860.3
860	183.6	230.1	272.2	325.6	366.6	420.8	456.3	510.2	565.5	619.8	675.4	727.7	790.0	852.4
865	175.5	222.0	264.2	317.6	358.6	412.9	448.3	502.3	557.5	611.9	667.4	719.8	782.1	844.5
870	167.3	213.9	256.1	309.5	350.6	404.8	440.3	494.3	549.5	603.9	659.4	711.8	774.1	836.5
875	159.2	205.7	253.5	301.4	355.1	396.7	446.3	486.2	541.5	595.8	651.4	703.7	766.0	828.5
880	150.9	197.5	245.2	293.2	346.9	388.6	438.2	478.1	533.4	587.8	643.3	695.6	757.9	820.5
885	147.5	189.2	237.0	285.0	338.7	380.4	430.0	470.0	525.2	579.6	635.2	687.5	749.8	812.4
890	139.1	180.9	228.6	276.7	330.4	372.2	421.8	461.8	517.0	571.4	627.0	679.3	741.6	804.3
895	130.8	172.5	220.3	268.4	322.1	363.9	413.5	453.6	508.8	563.2	618.7	671.1	733.4	796.1
900	122.3	164.1	211.8	265.9	313.7	368.8	405.2	460.0	500.5	554.9	610.5	662.8	725.1	787.8
905	113.8	155.6	203.4	257.4	305.3	360.4	396.8	451.6	492.2	546.6	602.1	654.4	716.7	779.6
910	105.3	152.2	194.9	249.0	296.8	351.9	388.4	443.2	483.8	538.2	593.8	646.1	708.4	771.2
915	96.7	143.6	186.3	240.4	288.3	343.4	379.9	434.7	475.4	529.8	585.3	637.6	700.0	762.9

Data: weight in kg for
D/d × 1000 mm

PA6C

Product Charts

Tubes



TUBES PA6C													Ø mm	
Ød \ ØD	950	975	1000	1025	1050	1075	1100	1125	1150	1175	1200	1225	1250	
920	135.0	177.7	231.8	279.8	334.9	371.4	426.2	466.9	521.3	576.9	629.2	691.5	754.4	
925	126.3	169.0	223.2	277.3	326.3	376.6	417.7	473.7	512.8	568.3	620.7	683.0	746.0	
930	117.6	160.3	214.5	268.6	317.6	368.0	409.0	465.1	504.2	559.8	612.1	674.4	737.4	
935	108.8	156.9	205.8	259.9	308.9	359.3	400.4	456.5	495.6	551.2	603.5	665.8	728.9	
940	100.0	148.1	197.0	251.1	300.2	350.5	391.7	447.8	487.0	542.5	594.8	657.1	720.3	
945		139.2	188.2	242.3	291.4	341.7	382.9	439.0	478.3	533.8	586.1	648.4	711.6	
950		130.3	179.4	233.5	289.0	332.9	388.6	430.2	485.5	525.0	577.4	639.7	702.9	
955		121.3	170.4	224.5	280.1	324.0	379.7	421.4	476.6	516.2	568.6	630.9	694.2	
960		112.3	167.1	215.6	271.1	315.1	370.7	412.5	467.7	507.4	559.7	622.0	685.4	
965		103.3	158.1	206.6	262.1	306.1	361.7	403.5	458.8	498.5	550.8	613.1	676.5	
970			149.0	197.5	253.0	297.0	352.7	394.6	449.8	489.6	541.9	604.2	667.6	
975			139.9	188.4	243.9	294.7	343.6	400.6	440.8	497.2	532.9	595.2	658.7	
980			130.7	179.3	234.8	285.6	334.5	391.5	431.7	488.1	523.9	586.2	649.7	
985			121.5	176.0	225.6	276.4	325.3	382.3	422.5	479.0	514.8	577.1	640.7	
990			112.2	166.7	216.3	267.1	316.1	373.1	413.4	469.8	505.7	568.0	631.6	
995				157.4	207.0	257.8	306.8	363.8	404.1	460.6	496.5	558.8	622.4	
1000				148.0	197.7	248.5	304.6	354.5	410.6	451.3	504.4	549.6	613.3	
1005				138.6	188.3	239.1	295.2	345.1	401.2	442.0	495.1	540.3	604.0	
1010				129.1	185.1	229.6	285.7	335.7	391.8	432.6	485.8	531.0	594.8	
1015				119.6	175.6	220.1	276.2	326.2	382.3	423.2	476.3	521.6	585.5	
1020					166.0	210.6	266.7	316.7	372.8	413.7	466.9	512.2	576.1	
1025					156.4	201.0	257.1	314.5	363.3	420.6	457.4	520.7	566.7	
1030					146.8	191.4	247.5	304.9	353.7	411.0	447.8	511.1	557.2	
1035					137.1	188.2	237.8	295.2	344.0	401.3	438.2	501.5	547.7	
1040					127.3	178.5	228.1	285.5	334.3	391.6	428.6	491.8	538.2	
1045						168.7	218.3	275.7	324.6	381.9	418.9	482.1	528.6	
1050						158.8	208.5	265.9	322.4	372.1	426.0	472.4	537.5	
1055						148.9	198.6	256.1	312.6	362.2	416.2	462.6	527.7	
1060						139.0	195.5	246.1	302.7	352.3	406.3	452.8	518.0	
1065						129.0	185.5	236.2	292.7	342.4	396.4	442.9	508.1	
1070							175.5	226.2	282.7	332.4	386.4	432.9	498.2	
1075							165.4	216.1	272.6	330.4	376.4	440.6	488.3	
1080							155.3	206.0	262.5	320.3	366.3	430.5	478.3	

Data: weight in kg for D/d × 1000 mm

Tubes



TUBES PA6C		Ø mm					
Ød \ ØD	1100	1125	1150	1175	1200	1225	1250
1085	145.1	203.0	252.4	310.1	356.1	420.4	468.3
1090	134.9	192.7	242.2	299.9	346.0	410.2	458.2
1095		182.5	231.9	289.7	335.7	400.0	448.1
1100		172.1	221.6	279.4	333.8	389.7	456.2
1105		161.8	211.3	269.0	323.4	379.4	445.9
1110		151.3	208.3	258.6	313.0	369.1	435.6
1115		140.9	197.8	248.2	302.6	358.6	425.3
1120			187.3	237.7	292.1	348.2	414.8
1125			176.8	227.2	281.6	346.3	404.4
1130			166.1	216.6	271.0	335.7	393.9
1135			155.5	213.7	260.3	325.1	383.3
1140			144.8	203.0	249.7	314.4	372.7
1145				192.2	238.9	303.7	362.1
1150				181.4	228.2	292.9	360.3
1155				170.6	217.3	282.1	349.6
1160				159.7	214.5	271.2	338.7
1165				148.7	203.5	260.3	327.9
1170					192.5	249.4	317.0
1175					181.5	238.3	306.0
1180					170.4	227.3	295.0
1185					159.3	224.5	283.9
1190					148.1	213.4	272.8
1195						202.1	261.7
1200						190.9	250.5
1205						179.5	239.2
1210						168.1	236.6
1215						156.7	225.2
1220							213.8
1225							202.3
1230							190.8
1235							179.2
1240							167.6



Data: weight in kg for
D/d × 1000 mm

For further dimensions please contact us directly.

Colours:

Natural, black

Other colours available on request

POM-C

Product Information



Our POM-C quality plastics

This semi-crystalline thermoplastic features good frictional properties and high dimensional stability. POM-C offers high mechanical load-bearing capacity paired with good machinability. For all customers requiring mechanically precise components and strict tolerance ranges, our POM-C is highly recommended. Thanks to its low moisture absorption, POM-C is suitable for components that must function under water or in a wet environment – humidity does not change its properties. POM-C is also resistant to a wide range of organic solvents and chemicals.

Applications of POM-C:

- For components requiring high dimensional stability (gearbox, guide roller, bearing, etc.)
- For components used in a humid environment.

Characteristics:

- Excellent friction properties
- High wear resistance
- High dimensional stability
- High chemical resistance
- Low moisture absorption

POM-C variants

POM-C Natural (whitish) / Black

Acetal in its pure form with no additives. POM-C is available in sheets, rods, blanks and finished parts manufactured according to your drawing. Our POM-C fulfils all food-contact safety requirements according to FDA and EN regulations.

POM-C Blue RAL5002

The ideal material choice for high visibility and safety compliance. The distinct blue color RAL5002 is not just appealing but serves a crucial purpose – it makes plastic fragments easily detectable, enhancing safety protocols in food processing environments.

POM-C Blue RAL5002 isn't just about its standout color; it comes with full EU10/2011 and FDA food approval, ensuring it meets the stringent standards required for food contact applications.

POM-C ESD AST/antistatic

This variant offers excellent antistatic performance and retains a constant level of conductivity between 10^9 and 10^{11} ohms. It is suitable for various applications in the semiconductor industry, as well as in LCD/TFT-related technology and other areas of the electronics and electrical appliance sectors.

POM-C ELS EC/conductive

Manufactured with CNT (carbon-nano-tube) POM-C, this option retains a constant conductivity between 10^6 and 10^9 ohms with minimal deviations from the physical properties of the original POM-C. It is suitable for various applications in the semiconductor industry, as well as in LCD/TFT-related technology and other areas of the electronics and electrical appliance sectors.



In addition to these existing options, we can supply you with specialised POM-C solutions to meet your individual technical requirements.

POM-C

Product Charts

Sheets



SHEETS POM-C	Thick- ness mm	Tolerance mm	Weight kg/item	Availability
2000 x 1000 mm	5	+0.1 ~ +1.0	14.80	S
	6	+0.1 ~ +1.0	17.76	S
	8	+0.1 ~ +1.0	23.68	S
	10	+0.1 ~ +2.0	29.60	S
	12	+0.1 ~ +2.0	35.52	S
	15	+0.1 ~ +2.0	44.40	S
	20	+0.1 ~ +2.0	59.20	S
	25	+0.1 ~ +2.0	74.00	S
	30	+0.3 ~ +3.5	88.80	S
	35	+0.3 ~ +3.5	103.60	S
	40	+0.3 ~ +3.5	118.40	S
	45	+0.3 ~ +3.5	133.20	S
	50	+0.3 ~ +3.5	148.00	S
	60	+0.3 ~ +4.5	177.60	S
	70	+0.3 ~ +4.5	207.20	S
	80	+0.3 ~ +5.5	236.80	S
	90	+0.3 ~ +5.5	266.40	S
	100	+0.3 ~ +5.5	296.00	S

SHEETS POM-C	Thick- ness mm	Tolerance mm	Weight kg/item	Availability
3000 x 620 mm	5	+0.1 ~ +1.0	13.54	MTO
	6	+0.1 ~ +1.0	16.25	MTO
	8	+0.1 ~ +1.0	21.67	MTO
	10	+0.1 ~ +2.0	27.08	MTO
	12	+0.1 ~ +2.0	32.50	MTO
	15	+0.1 ~ +2.0	40.63	MTO
	20	+0.1 ~ +2.0	54.17	MTO
	25	+0.1 ~ +2.0	67.71	MTO
	30	+0.3 ~ +3.5	81.25	MTO
	35	+0.3 ~ +3.5	94.79	MTO
	40	+0.3 ~ +3.5	108.34	MTO
	45	+0.3 ~ +3.5	121.88	MTO
	50	+0.3 ~ +3.5	135.42	MTO
	60	+0.3 ~ +4.5	162.50	MTO
	70	+0.3 ~ +4.5	189.59	MTO
	80	+0.3 ~ +5.5	216.67	MTO
	90	+0.3 ~ +5.5	243.76	MTO
	100	+0.3 ~ +5.5	270.84	MTO

SHEETS POM-C	Thickness mm	Weight kg/item	Availability
2000 x 1000 mm	1	3.24	Calendered Standard
	2	6.48	Calendered Standard
	3	9.72	Calendered Standard

SHEETS POM-C	Thick- ness mm	Tolerance mm	Weight kg/item	Availability
3000 x 1220 mm	5	+0.1 ~ +1.0	27.08	MTO
	6	+0.1 ~ +1.0	32.50	MTO
	8	+0.1 ~ +1.0	43.33	MTO
	10	+0.1 ~ +2.0	54.17	MTO
	12	+0.1 ~ +2.0	65.00	MTO
	15	+0.1 ~ +2.0	81.25	MTO
	20	+0.1 ~ +2.0	108.34	MTO
	25	+0.1 ~ +2.0	135.42	MTO
	30	+0.3 ~ +3.5	162.50	MTO
	35	+0.3 ~ +3.5	189.59	MTO
	40	+0.3 ~ +3.5	216.67	MTO
	45	+0.3 ~ +3.5	243.76	MTO
	50	+0.3 ~ +3.5	270.84	MTO
	60	+0.3 ~ +4.5	325.01	MTO
	70	+0.3 ~ +4.5	379.18	MTO
	80	+0.3 ~ +5.5	433.34	MTO
	90	+0.3 ~ +5.5	487.51	MTO
	100	+0.3 ~ +5.5	541.68	MTO



Colour:

Natural (whitish), black, blue RAL 5002
Other colours on request

For other dimensions please contact us directly!

Availability:
S = Standard
MTO = Made To Order / MOQ = Upon Request

POM-C

Product Charts



Round Bars

ROUND BARS POM-C	Ø mm	Tolerance mm	Weight kg/item		Availability
			L = 1000 mm	L = 3000 mm	
	6	+0.1 ~ +0.6	0.04	0.13	S
	7	+0.1 ~ +0.6	0.06	0.17	S
	8	+0.1 ~ +0.6	0.07	0.22	S
	9	+0.1 ~ +0.6	0.09	0.28	S
	10	+0.1 ~ +0.6	0.12	0.35	S
	11	+0.1 ~ +1.0	0.14	0.42	S
	12	+0.1 ~ +1.0	0.17	0.50	S
	13	+0.1 ~ +1.0	0.20	0.59	S
	14	+0.1 ~ +1.0	0.23	0.68	S
	15	+0.1 ~ +1.0	0.26	0.78	S
	16	+0.1 ~ +1.0	0.30	0.89	S
	20	+0.1 ~ +1.0	0.46	1.39	S
	25	+0.1 ~ +1.5	0.73	2.18	S
	30	+0.1 ~ +1.5	1.05	3.14	S
	35	+0.1 ~ +1.5	1.42	4.27	S
	40	+0.1 ~ +1.5	1.86	5.58	S
	45	+0.2 ~ +2.0	2.35	7.06	S
	50	+0.2 ~ +2.0	2.90	8.71	S
	55	+0.2 ~ +2.0	3.51	10.54	S
	60	+0.2 ~ +2.2	4.18	12.55	S
	65	+0.2 ~ +2.2	4.91	14.73	S
	70	+0.2 ~ +2.2	5.69	17.08	S
	75	+0.3 ~ +2.5	6.54	19.61	S
	80	+0.3 ~ +2.5	7.44	22.31	S

ROUND BARS POM-C	Ø mm	Tolerance mm	Weight kg/item		Availability
			L = 1000 mm	L = 3000 mm	
	85	+0.3 ~ +2.5	8.39	25.18	S
	90	+0.3 ~ +2.5	9.41	28.23	S
	95	+0.5 ~ +3.5	10.49	31.46	S
	100	+0.5 ~ +3.5	11.62	34.85	S
	110	+0.5 ~ +3.5	14.06	42.17	S
	120	+0.5 ~ +4.5	16.73	50.19	S
	125	+0.5 ~ +4.5	18.15	54.46	S
	130	+0.5 ~ +4.5	19.63	58.90	S
	140	+0.5 ~ +4.5	22.77	68.31	S
	150	+0.5 ~ +4.5	26.14	78.42	S
	160	+1.0 ~ +5.5	29.74	89.23	S
	170	+1.0 ~ +5.5	33.58	100.73	S
	180	+1.0 ~ +5.5	37.64	112.93	S
	190	+1.0 ~ +5.5	41.94	125.82	S
	200	+1.0 ~ +5.5	46.47	139.42	S
	210	+1.0 ~ +7.0	51.24	153.71	S
	220	+1.0 ~ +7.0	56.23	168.69	S
	225	+1.0 ~ +7.0	58.82	176.45	S
	230	+1.0 ~ +7.0	61.46	184.38	S
	240	+1.0 ~ +7.0	66.92	200.76	S
	250	+1.0 ~ +7.0	72.61	217.83	S
	280	+1.0 ~ +7.0	91.09	273.26	S
	300	+1.0 ~ +7.0	104.56	313.69	S



Availability:
 S = Standard
 MTO = Made To Order / MOQ = Upon Request

PET

Product Information



Our PET quality plastics

Alongside POM-C and PA6 casting, PET (or PET P) is one of the most widely-used technical plastics. Its excellent mechanical properties make it ideal for applications like precision mechanical components. PET offers high tensile strength and mechanical load-bearing capacity, stable hardness and good dimensional stability. Because of its low coefficient of friction, Comco PET is frequently used for components demanding high wear resistance such as wear parts, bearings, bushings, turntables or track rollers. PET is also suitable for applications in the food processing industry requiring high chemical resistance and low moisture absorption.

Applications of PET:

- PET is used for various types of gears, wear pads, guide rollers, bearings and components used in food processing.

Characteristics:

- Excellent mechanical properties
- High dimensional stability
- High chemical resistance
- Low moisture absorption
- Low thermal expansion

Sheets



SHEETS PET	Thick- ness mm	Tolerance mm	Weight kg/item	Avail- ability
1000 x 610 mm	10	+0.2 ~ +0.9	8.97	S
	12	+0.3 ~ +1.5	10.76	S
	16	+0.3 ~ +1.5	14.35	S
	20	+0.3 ~ +1.5	17.93	S
	25	+0.3 ~ +1.5	22.42	S
	30	+0.3 ~ +1.5	26.90	S
	35	+0.5 ~ +2.5	31.38	S
	40	+0.5 ~ +2.5	35.87	S
	50	+0.5 ~ +2.5	44.84	S
	60	+0.5 ~ +3.5	53.80	S
	80	+0.5 ~ +3.5	71.74	S
	100	+0.5 ~ +5.5	89.67	S

Colours:

Natural (cream)

Other colours available on request

For other dimensions, please contact us directly.

Round Bars



ROUND BARS PET	Ø mm	Tolerance mm	Weight	Weight	Avail- ability
			kg/item L = 1000 mm	kg/item L = 3000 mm	
	10	+0.1 ~ +0.5	0.12	0.35	S
	12	+0.1 ~ +0.7	0.17	0.50	MTO
	16	+0.1 ~ +0.7	0.30	0.89	S
	20	+0.1 ~ +0.7	0.46	1.38	S
	25	+0.2 ~ +0.9	0.72	2.16	S
	30	+0.2 ~ +0.9	1.04	3.12	S
	35	+0.2 ~ +1.1	1.41	4.24	MTO
	40	+0.2 ~ +1.1	1.85	5.54	S
	45	+0.3 ~ +1.3	2.34	7.01	S
	50	+0.3 ~ +1.3	2.88	8.65	S
	55	+0.3 ~ +1.3	3.49	10.47	S
	60	+0.3 ~ +1.6	4.15	12.46	S
	65	+0.3 ~ +1.6	4.88	14.63	S
	70	+0.3 ~ +1.6	5.65	16.96	S
	75	+0.3 ~ +1.6	6.49	19.47	MTO
	80	+0.4 ~ +2.0	7.39	22.16	S
	85	+0.4 ~ +2.0	8.34	25.01	MTO
	90	+0.5 ~ +2.2	9.35	28.04	S
	95	+0.5 ~ +2.2	10.41	31.24	MTO
	100	+0.6 ~ +2.5	11.54	34.62	S
	110	+0.7 ~ +3.0	13.96	41.89	S
	120	+0.8 ~ +3.5	16.62	49.85	S
	130	+0.8 ~ +3.5	19.50	58.51	S
	140	+0.9 ~ +3.8	22.62	67.85	S
	150	+1.0 ~ +3.8	25.96	77.89	S
	160	+1.1 ~ +4.2	29.54	88.62	S
	180	+1.2 ~ +5.0	37.39	112.16	S
	200	+1.3 ~ +5.5	46.16	138.47	S



PET-P is available in sheets, rods, blanks and finished parts manufactured according to your drawings. In addition, we supply individual solutions tailored to your specific technical requirements.

PEEK

Product Information



Our PEEK Quality Plastics

PEEK offers excellent mechanical strength, high chemical and hydrolysis resistance as well as high radiation and steam resistance. The continuous operating temperature of PEEK is about 250°C. Thanks to its excellent thermal properties, PEEK is suitable for applications at very high temperatures. Its physical properties remain unaffected by the external environment.

Areas of application for PEEK:

- This highly robust material is used for components in semiconductor systems, LCD manufacturing plants, fine machining plants, chemical plants, electroplating plants and insulating materials.

Characteristics:

- Excellent thermal properties
- Excellent mechanical properties
- Excellent wear resistance
- Excellent creep resistance
- Excellent chemical resistance
- Excellent radiation resistance
- Non-flammable

PEEK Variants

PEEK Natural (beige-brown) / Black

COMCO PEEK is an unmodified standard grade of polyetheretherketone, available in natural (beige-brown) and black. It is supplied in sheets, rods, blanks, and finished parts made to customer specification.

Please note that when the glass transition temperature of approximately 150 °C is reached, changes in the physical properties of PEEK may occur.

PEEK-ELS EC/conductive

This variant is made of CNT (carbo-nano-tube) PEEK resin. It retains a constant conductivity level between 10^4 and 10^6 ohms. The physical properties remain almost unchanged – just like those of the original PEEK.

.....

PEEK CF30 Black

PEEK CF30 is a high-performance thermoplastic composite consisting of polyetheretherketone (PEEK) reinforced with 30% carbon fibers. This reinforcement significantly enhances its mechanical, thermal, and wear properties compared to unfilled PEEK, making it suitable for demanding engineering applications.

The addition of carbon fibers increases the tensile modulus to approximately 6,800 MPa and flexural strength to around 193 MPa, providing enhanced stiffness and load-bearing capacity.

PEEK CF30 exhibits a high heat deflection temperature, withstanding temperatures up to 300°C, making it suitable for high-temperature applications.

.....

PEEK GF30 Natural (Whitish)

PEEK GF30 is a high-performance thermoplastic composite made from polyetheretherketone (PEEK) reinforced with 30% glass fibers.

The addition of 30% glass fibers increases the modulus of elasticity to approximately 6,300 MPa and tensile strength to around 113 MPa, providing enhanced rigidity and load-bearing capacity.

It maintains high thermal stability, with a continuous service temperature of up to 250°C and a heat deflection temperature around 315°C, making it suitable for high-temperature applications.

.....

PEEK HPV Black

PEEK HPV (High Pressure Velocity) with PTFE, Carbon Fiber, and Graphite, designed for optimal wear resistance and toughness. A specialized variant of polyetheretherketone (PEEK) engineered for applications demanding exceptional wear resistance, low friction, and high load-bearing capacity. This grade is particularly suitable for components such as bearings, bushings, thrust washers, and seals operating under challenging conditions.

PEEK HPV is a composite material reinforced with Carbon Fibers, enhance mechanical strength and stiffness. Graphite and PTFE (Polytetrafluoroethylene), provide self-lubricating properties, resulting in a low coefficient of friction and excellent wear resistance.

PEEK

Product Charts

Sheets

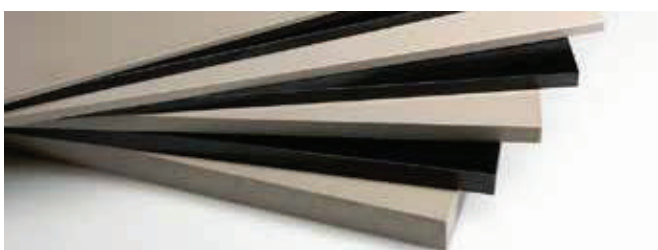


SHEETS PEEK	Thickness mm	Tolerance mm	Weight kg/item	Availability
1000 x 610 mm	5	+0.2 ~ +1.2	4.18	S
	6	+0.2 ~ +1.2	5.01	S
	8	+0.2 ~ +1.2	6.69	S
	10	+0.2 ~ +1.5	8.36	S
	12	+0.2 ~ +1.5	10.03	S
	16	+0.2 ~ +1.5	13.37	S
	20	+0.2 ~ +1.5	16.71	S
	25	+0.2 ~ +1.5	20.89	S
	30	+0.2 ~ +1.5	25.07	S
	35	+0.2 ~ +2.0	29.25	S
	40	+0.2 ~ +2.0	33.43	S
	45	+0.2 ~ +2.0	37.61	S
	50	+0.2 ~ +2.0	41.79	S
	55	+0.2 ~ +2.0	45.96	S
	60	+0.2 ~ +2.0	50.14	S

SHEETS PEEK	Thickness mm	Tolerance mm	Weight kg/item	Availability
2000 x 1000 mm	8	+0.2 ~ +1.5	21.92	S
	10	+0.2 ~ +1.5	27.40	S
	12	+0.2 ~ +1.5	32.88	S
	16	+0.2 ~ +1.5	43.84	S
	20	+0.2 ~ +1.5	54.80	S
	25	+0.2 ~ +1.5	68.50	S
	30	+0.2 ~ +1.5	82.20	S
	25	+0.2 ~ +1.5	68.50	S
	30	+0.2 ~ +1.5	82.20	S

SHEETS PEEK	Thickness mm	Tolerance mm	Weight kg/item	Availability
1250 x 1000 mm	5	+0.2 ~ +1.0	9.90	MTO
	6	+0.2 ~ +1.0	11.60	MTO
	8	+0.2 ~ +1.0	14.92	MTO
	10	+0.2 ~ +1.0	18.40	MTO
	12	+0.2 ~ +1.0	21.74	MTO
	15	+0.2 ~ +1.0	26.80	MTO
	16	+0.2 ~ +1.0	28.40	MTO
	18	+0.2 ~ +1.0	31.84	MTO
	20	+0.5 ~ +1.5	35.20	MTO
	22	+0.5 ~ +1.5	38.60	MTO
	25	+0.5 ~ +1.5	43.80	MTO
	28	+0.5 ~ +1.5	48.86	MTO
	30	+0.5 ~ +1.5	52.70	MTO
	35	+0.5 ~ +1.5	61.50	MTO
	40	+0.5 ~ +2.0	69.90	MTO
	45	+0.5 ~ +2.0	78.20	MTO
50	+0.5 ~ +3.0	86.90	MTO	

SHEETS PEEK	Thickness mm	Tolerance mm	Weight kg/item	Availability
3000 x 1250 mm	5	+0.2 ~ +1.0	29.70	MTO
	6	+0.2 ~ +1.0	34.80	MTO
	8	+0.2 ~ +1.0	44.76	MTO
	10	+0.2 ~ +1.0	55.20	MTO
	12	+0.2 ~ +1.0	65.22	MTO
	15	+0.2 ~ +1.0	80.40	MTO
	16	+0.2 ~ +1.0	85.20	MTO
	18	+0.2 ~ +1.0	95.52	MTO
	20	+0.5 ~ +1.5	105.60	MTO
	22	+0.5 ~ +1.5	115.80	MTO
	25	+0.5 ~ +1.5	131.40	MTO
	28	+0.5 ~ +1.5	146.58	MTO
	30	+0.5 ~ +1.5	158.10	MTO
	35	+0.5 ~ +1.5	184.50	MTO
	40	+0.5 ~ +2.0	209.70	MTO
	45	+0.5 ~ +2.0	234.60	MTO
50	+0.5 ~ +3.0	260.70	MTO	



Colours:

Natural (brownish), black
Other colours available on request

For further dimensions, please contact us directly.

PEEK is available in sheets, rods, blanks and finished parts manufactured according to your drawings. We also supply different variants made to meet your special technical needs.

Round bars



ROUND BARS PEEK	Ø mm	Tolerance mm	Weight kg/item		Availability
			L = 1000 mm	L = 3000 mm	
	3	+0.2 ~ +1.0	0.01	0.04	S
	4	+0.2 ~ +1.0	0.02	0.07	S
	5	+0.2 ~ +1.0	0.03	0.08	S
	6	+0.2 ~ +1.0	0.04	0.12	S
	8	+0.2 ~ +1.0	0.07	0.21	S
	10	+0.2 ~ +1.0	0.11	0.32	S
	12	+0.2 ~ +1.0	0.16	0.47	S
	13	+0.2 ~ +1.0	0.19	0.57	S
	15	+0.2 ~ +1.0	0.75	0.25	S
	16	+0.2 ~ +1.0	0.28	0.83	S
	18	+0.2 ~ +1.0	0.36	1.08	S
	20	+0.2 ~ +1.5	0.43	1.29	S
	22	+0.2 ~ +1.5	0.54	1.62	S
	25	+0.2 ~ +1.5	0.67	2.02	S
	26	+0.2 ~ +1.0	0.75	2.25	S
	28	+0.2 ~ +1.0	0.84	2.52	S
	30	+0.2 ~ +1.5	0.97	2.90	S
	32	+0.2 ~ +1.5	1.13	3.30	S
	35	+0.2 ~ +1.5	1.32	3.95	S
	38	+0.2 ~ +1.5	1.58	4.74	S
	40	+0.2 ~ +1.5	1.72	5.16	S
	45	+0.2 ~ +1.5	2.18	6.53	S
	50	+0.2 ~ +1.5	2.69	8.07	S
	55	+0.2 ~ +1.5	3.25	9.76	S
	60	+0.5 ~ +2.0	3.87	11.62	S
	65	+0.5 ~ +2.0	4.54	13.63	S
	70	+0.5 ~ +2.5	5.27	15.81	S
	75	+0.5 ~ +2.5	6.05	18.15	S
	80	+0.5 ~ +2.5	6.88	20.65	S
	85	+0.5 ~ +2.5	7.60	22.80	S
	90	+0.5 ~ +2.5	8.71	26.13	S
	100	+1.0 ~ +3.0	10.76	32.26	S
	105	+1.0 ~ +3.0	11.60	34.80	S
	110	+1.0 ~ +3.0	13.01	39.04	S
	115	+1.0 ~ +3.0	13.95	41.85	S
	120	+1.0 ~ +3.0	15.49	46.46	S
	125	+1.0 ~ +3.0	16.60	49.80	S
	130	+1.0 ~ +3.0	18.18	54.53	S
	140	+1.0 ~ +3.0	21.08	63.24	S
	150	+1.0 ~ +3.0	24.20	72.59	S
	160	+1.0 ~ +3.0	27.53	82.60	S
	165	+1.0 ~ +3.0	28.52	85.56	S
	180	+1.0 ~ +3.0	34.85	104.53	S
	185	+1.0 ~ +3.0	36.60	109.80	S
	190	+1.0 ~ +3.0	38.82	116.47	S
	200	+1.0 ~ +3.0	43.02	129.05	S
	215	+1.0 ~ +3.0	49.24		S
	220	+1.0 ~ +3.0	51.53		S
	235	+1.0 ~ +3.0	58.70		S
	250	+1.0 ~ +3.0	66.85		S
	260	+1.0 ~ +3.0	72.22		S
	300	+1.0 ~ +3.0	95.76		S



Colours:

Natural (brownish), black
Other colours available on request

For further dimensions, please contact us directly.

PEEK is available in sheets, rods, blanks and finished parts manufactured according to your drawings.

We also supply different variants made to meet your special technical needs.

PEEK

Product Charts

Tubes



TUBES PEEK	Ø OD mm	Ø ID mm	Weight kg/item		Availa- bility
			L = 1000 mm	L = 3000 mm	
	39	19.5	1.30	3.91	MTO
	46	21	1.87	5.62	MTO
	46	21	1.87	5.62	MTO
	49	38	1.17	3.52	MTO
	51	28	2.05	6.14	MTO
	51	32	1.81	5.42	MTO
	57	40	1.91	5.73	MTO
	61	39	2.49	7.46	MTO
	61	35	2.79	8.36	MTO
	64	39	2.88	8.65	MTO
	64	35	3.18	9.54	MTO
	61	35	2.79	8.36	MTO
	61	39	2.49	7.46	MTO
	66	30	3.78	11.34	MTO
	66	35	3.45	10.36	MTO
	66	45	2.65	7.94	MTO
	71	30	4.50	13.50	MTO
	71	49	2.98	8.95	MTO
	73	41	4.02	12.05	MTO
	78	48	4.18	12.53	MTO
	78	55	3.45	10.34	MTO
	82	58	3.77	11.32	MTO
	82	35	5.94	17.82	MTO
	82	50	4.65	13.95	MTO
	86	53	5.04	15.12	MTO
	86	43	6.02	18.05	MTO
	86	43	6.02	18.05	MTO
	84	71	2.41	7.23	MTO
	91	45	6.76	20.29	MTO
	91	56	5.64	16.91	MTO
	91	70	3.84	11.51	MTO
	91	77	2.79	8.36	MTO
	92	36	7.69	23.08	MTO
	94	70	4.42	13.26	MTO
	97	56	6.82	20.45	MTO
	97	66	5.57	16.72	MTO
	97	81	3.32	9.96	MTO
	99	79	4.06	12.17	MTO
	107	89	4.06	12.19	MTO
	105	75	5.97	17.91	MTO
	103	71	6.13	18.39	MTO
	105	75	5.97	17.91	MTO

TUBES PEEK	Ø OD mm	Ø ID mm	Weight kg/item		Availa- bility
			L = 1000 mm	L = 3000 mm	
	105	78	5.50	16.50	MTO
	105	79	5.34	16.02	MTO
	105	67	7.13	21.39	MTO
	107	66	7.71	23.12	MTO
	107	89	4.06	12.19	MTO
	107	75	6.41	19.24	MTO
	113	43	11.64	34.92	MTO
	113	58	10.10	30.30	MTO
	113	59	9.98	29.94	MTO
	113	70	8.53	25.60	MTO
	113	81	6.83	20.50	MTO
	113	89	5.44	16.33	MTO
	116	81	7.55	22.66	MTO
	119	59	11.44	34.31	MTO
	119	89	6.90	20.69	MTO
	120	99	5.22	15.66	MTO
	122	93	6.91	20.72	MTO
	122	84	8.54	25.61	MTO
	126	103	5.93	17.80	MTO
	126	86	9.23	27.68	MTO
	126	74	11.19	33.57	MTO
	129	98	7.76	23.29	MTO
	129	79	11.21	33.62	MTO
	130	99	7.83	23.49	MTO
	134	54	15.97	47.92	MTO
	134	71	13.81	41.42	MTO
	134	97	9.34	28.01	MTO
	134	104	7.89	23.68	MTO
	134	109	6.80	20.40	MTO
	134	114	5.65	16.96	MTO
	135	67	14.65	43.96	MTO
	142	56	18.05	54.16	MTO
	142	74	15.67	47.00	MTO
	142	118	7.00	21.01	MTO
	144	110	9.48	28.43	MTO
	155	120	10.54	31.63	MTO
	155	130	7.97	23.92	MTO
	160	89	18.84	56.51	MTO
	160	112	14.09	42.28	MTO
	160	130	9.62	28.85	MTO
	160	140	6.84	20.52	MTO
	164	99	18.26	54.78	MTO



Tubes

TUBES PEEK	Ø OD mm	Ø ID mm	Weight	Weight	Availa- bility
			kg/item L = 1000 mm	kg/item L = 3000 mm	
	164	134	9.88	29.64	MTO
	171	114	17.42	52.27	MTO
	171	127	14.20	42.61	MTO
	172	134	12.68	38.05	MTO
	171	150	7.65	22.95	MTO
	180	84	26.81	80.43	MTO
	184	150	12.46	37.38	MTO
	187	137	17.46	52.37	MTO
	189	134	19.08	57.23	MTO
	189	157	12.19	36.57	MTO
	192	150	15.59	46.78	MTO
	203	122	27.95	83.85	MTO
	205	164	16.44	49.32	MTO
	205	169	14.73	44.18	MTO
	205	181	10.40	31.20	MTO
	207	174	13.82	41.45	MTO
	209	134	27.37	82.10	MTO
	214	137	28.73	86.20	MTO
	214	161	21.37	64.11	MTO
	224	128	35.74	107.23	MTO
	222	141	31.22	93.66	MTO
	224	177	20.36	61.08	MTO
	224	191	15.05	45.15	MTO
	224	195	13.46	40.38	MTO
	228	210	9.08	27.23	MTO
	237	145	37.21	111.62	MTO
	237	142	38.09	114.28	MTO
	237	169	29.45	88.35	MTO
	239	190	22.67	68.01	MTO
	239	210	14.42	43.27	MTO
	242	219	11.94	35.83	MTO
	243	161	35.16	105.49	MTO
	251	195	26.80	80.41	MTO
	249	119	50.33	151.00	MTO
	251	177	33.71	101.12	MTO
	251	185	30.72	92.16	MTO
	255	190	30.89	92.68	MTO
	259	220	20.35	61.05	MTO
	261	220	21.43	64.30	MTO
	260	214	23.58	70.73	MTO
	266	233	18.10	54.29	MTO
	283	201	42.13	126.38	MTO

TUBES PEEK	Ø OD mm	Ø ID mm	Weight	Weight	Availa- bility
			kg/item L = 1000 mm	kg/item L = 3000 mm	
	283	226	31.12	93.35	MTO
	284	248	20.95	62.84	MTO
	286	264	13.68	41.03	MTO
	284	244	22.98	68.94	MTO
	289	260	17.64	52.91	MTO
	289	267	13.83	41.48	MTO
	293	260	20.06	60.17	MTO
	293	266	16.80	50.39	MTO
	303	239	37.07	111.20	MTO
	303	235	39.02	117.07	MTO
	305	262	26.44	79.32	MTO
	324	262	38.86	116.58	MTO
	324	277	30.52	91.55	MTO
	335	240	57.79	173.38	MTO
	335	294	28.03	84.08	MTO
	342	239	63.21	189.64	MTO
	345	315	21.88	65.65	MTO
	350	332	14.13	42.40	MTO
	362	248	73.32	219.96	MTO
	362	270	61.56	184.68	MTO
	362	288	51.19	153.56	MTO
	362	312	36.32	108.95	MTO
	362	248	73.32	219.96	MTO
	377	277	69.12	207.37	MTO
	377	294	59.10	177.30	MTO
	377	313	47.19	141.57	MTO
	376	343	26.08	78.23	MTO
	376	343	26.08	78.23	MTO
	380	240	91.23	273.68	MTO
	386	343	33.99	101.98	MTO
	413	354	48.48	145.44	MTO
	432	372	51.65	154.96	MTO
	428	392	32.29	96.86	MTO
	453	392	55.16	165.49	MTO
	597	447	164.43	493.30	MTO

Colours:

Natural (brownish), black
Other colours available on request

For further dimensions, please contact us directly.

PEEK CF30

Product Charts

Sheets



SHEETS PEEK CF30	Thickness mm	Tolerance mm	Weight kg/item	Avail- ability
1000 x 620 mm	6	+0.2 ~ +1.5	6.10	S
	8	+0.2 ~ +1.5	8.00	S
	10	+0.2 ~ +1.5	9.80	S
	15	+0.2 ~ +1.5	14.20	S
	20	+0.2 ~ +1.5	18.65	S
	25	+0.2 ~ +1.5	23.30	S
	30	+0.2 ~ +1.5	27.60	S
	35	+0.2 ~ +2.0	32.00	S
	40	+0.2 ~ +3.0	36.50	S

SHEETS PEEK CF30	Thickness mm	Tolerance mm	Weight kg/item	Avail- ability
3000 x 620 mm	6	+0.2 ~ +1.5	18.30	MTO
	8	+0.2 ~ +1.5	24.00	MTO
	10	+0.2 ~ +1.5	29.40	MTO
	15	+0.2 ~ +1.5	42.60	MTO
	20	+0.2 ~ +1.5	55.95	MTO
	25	+0.2 ~ +1.5	69.90	MTO
	30	+0.2 ~ +1.5	82.80	MTO
	35	+0.2 ~ +2.0	96.00	MTO
	40	+0.2 ~ +3.0	109.50	MTO

Colours:

Black

Other colours available on request

For further dimensions, please contact us directly.



Round bars



ROUND BARS PEEK CF30	Ø mm	Tolerance mm	Weight kg/item L = 1000 mm	Avail- ability
	8	+0.2 ~ +1.0	0.08	S
	10	+0.2 ~ +1.0	0.13	S
	12	+0.2 ~ +1.0	0.18	S
	15	+0.2 ~ +1.0	0.27	S
	16	+0.2 ~ +1.0	0.32	S
	18	+0.2 ~ +1.0	0.39	S
	20	+0.2 ~ +1.0	0.48	S
	22	+0.2 ~ +1.0	0.57	S
	25	+0.2 ~ +1.0	0.73	S
	28	+0.2 ~ +1.0	0.92	S
	30	+0.2 ~ +1.0	1.08	S
	32	+0.2 ~ +1.0	1.20	S
	35	+0.2 ~ +1.0	1.43	S
	40	+0.2 ~ +1.5	1.87	S
	45	+0.2 ~ +1.5	2.33	S
	50	+0.2 ~ +1.5	2.87	S
	55	+0.2 ~ +1.5	3.60	S
	60	+0.2 ~ +2.0	4.28	S
	65	+0.2 ~ +2.0	4.86	S
	70	+0.2 ~ +2.5	5.59	S
	75	+0.2 ~ +2.5	6.49	S
	80	+0.2 ~ +2.5	7.58	S
	85	+0.2 ~ +2.5	8.25	S
	90	+0.2 ~ +2.5	9.17	S
	100	+0.2 ~ +2.5	11.32	S
	110	+0.2 ~ +3.0	14.30	S
	120	+0.2 ~ +3.0	16.80	S
	130	+0.2 ~ +3.0	19.80	S
	140	+0.2 ~ +3.0	22.20	S
	150	+0.2 ~ +3.0	25.70	S

PEEK GF30

Product Charts

Sheets



SHEETS PEEK GF30	Thickness mm	Tolerance mm	Weight kg/item	Avail- ability
1000 x 620 mm	6	+0.2 ~ +1.5	6.60	S
	8	+0.2 ~ +1.5	8.55	S
	10	+0.2 ~ +1.5	10.55	S
	15	+0.2 ~ +1.5	15.70	S
	20	+0.2 ~ +1.5	21.04	S
	25	+0.2 ~ +1.5	25.93	S
	30	+0.2 ~ +1.5	30.80	S
	35	+0.2 ~ +2.0	35.70	S
	40	+0.2 ~ +3.0	40.60	S

SHEETS PEEK GF30	Thickness mm	Tolerance mm	Weight kg/item	Avail- ability
3000 x 620 mm	6	+0.2 ~ +1.5	19.80	MTO
	8	+0.2 ~ +1.5	25.65	MTO
	10	+0.2 ~ +1.5	31.65	MTO
	15	+0.2 ~ +1.5	47.10	MTO
	20	+0.2 ~ +1.5	63.12	MTO
	25	+0.2 ~ +1.5	77.79	MTO
	30	+0.2 ~ +1.5	92.40	MTO
	35	+0.2 ~ +2.0	107.10	MTO
	40	+0.2 ~ +3.0	121.80	MTO

Colours:

Natural

Other colours available on request

For further dimensions, please contact us directly.



Round bars



ROUND BARS PEEK GF30	Ø mm	Tolerance mm	Weight kg/item L = 1000 mm	Avail- ability
	8	+0.2 ~ +1.0	0.09	S
	10	+0.2 ~ +1.0	0.14	S
	12	+0.2 ~ +1.0	0.19	S
	15	+0.2 ~ +1.0	0.29	S
	16	+0.2 ~ +1.0	0.34	S
	18	+0.2 ~ +1.0	0.43	S
	20	+0.2 ~ +1.0	0.55	S
	22	+0.2 ~ +1.0	0.62	S
	25	+0.2 ~ +1.0	0.81	S
	28	+0.2 ~ +1.0	0.99	S
	30	+0.2 ~ +1.0	1.17	S
	32	+0.2 ~ +1.0	1.30	S
	35	+0.2 ~ +1.0	1.62	S
	40	+0.2 ~ +1.5	2.16	S
	45	+0.2 ~ +1.5	2.66	S
	50	+0.2 ~ +1.5	3.42	S
	55	+0.2 ~ +1.5	4.08	S
	60	+0.2 ~ +2.0	4.90	S
	65	+0.2 ~ +2.0	5.57	S
	70	+0.2 ~ +2.5	6.80	S
	75	+0.2 ~ +2.5	7.15	S
	80	+0.2 ~ +2.5	8.78	S
	85	+0.2 ~ +2.5	9.20	S
	90	+0.2 ~ +2.5	10.90	S
	100	+0.2 ~ +2.5	13.13	S
	110	+0.2 ~ +3.0	16.38	S
	120	+0.2 ~ +3.0	18.40	S
	130	+0.2 ~ +3.0	22.35	S
	140	+0.2 ~ +3.0	24.90	S
	150	+0.2 ~ +3.0	30.15	S



PEEK HPV

Product Charts

Sheets



SHEETS PEEK HPV	Thickness mm	Tolerance mm	Weight kg/item	Avail- ability
1000 x 620 mm	6	+0.2 ~ +1.5	6.07	S
	8	+0.2 ~ +1.5	8.23	S
	10	+0.2 ~ +1.5	10.08	S
	15	+0.2 ~ +1.5	14.61	S
	20	+0.2 ~ +1.5	19.19	S
	25	+0.2 ~ +1.5	23.97	S
	30	+0.2 ~ +1.5	28.39	S
	35	+0.2 ~ +2.0	32.92	S
	40	+0.2 ~ +3.0	37.55	S

SHEETS PEEK HPV	Thickness mm	Tolerance mm	Weight kg/item	Avail- ability
3000 x 620 mm	6	+0.2 ~ +1.5	18.21	MTO
	8	+0.2 ~ +1.5	24.69	MTO
	10	+0.2 ~ +1.5	30.25	MTO
	15	+0.2 ~ +1.5	43.83	MTO
	20	+0.2 ~ +1.5	57.56	MTO
	25	+0.2 ~ +1.5	71.91	MTO
	30	+0.2 ~ +1.5	85.18	MTO
	35	+0.2 ~ +2.0	98.76	MTO
	40	+0.2 ~ +3.0	112.65	MTO

Colours:

Black

Other colours available on request

For further dimensions, please contact us directly.



Round bars



ROUND BARS PEEK HPV	Ø mm	Tolerance mm	Weight kg/item L = 1000 mm	Avail- ability
	8	+0.2 ~ +1.0	0.08	S
	10	+0.2 ~ +1.0	0.14	S
	12	+0.2 ~ +1.0	0.19	S
	15	+0.2 ~ +1.0	0.28	S
	16	+0.2 ~ +1.0	0.33	S
	18	+0.2 ~ +1.0	0.40	S
	20	+0.2 ~ +1.0	0.49	S
	22	+0.2 ~ +1.0	0.59	S
	25	+0.2 ~ +1.0	0.75	S
	28	+0.2 ~ +1.0	0.95	S
	30	+0.2 ~ +1.0	1.11	S
	32	+0.2 ~ +1.0	1.23	S
	35	+0.2 ~ +1.0	1.47	S
	40	+0.2 ~ +1.5	1.92	S
	45	+0.2 ~ +1.5	2.40	S
	50	+0.2 ~ +1.5	2.95	S
	55	+0.2 ~ +1.5	3.70	S
	60	+0.2 ~ +2.0	4.40	S
	65	+0.2 ~ +2.0	5.00	S
	70	+0.2 ~ +2.5	5.75	S
	75	+0.2 ~ +2.5	6.68	S
	80	+0.2 ~ +2.5	7.80	S
	85	+0.2 ~ +2.5	8.49	S
	90	+0.2 ~ +2.5	9.43	S
	100	+0.2 ~ +2.5	11.65	S
	110	+0.2 ~ +3.0	14.71	S
	120	+0.2 ~ +3.0	17.28	S
	130	+0.2 ~ +3.0	20.27	S
	140	+0.2 ~ +3.0	22.84	S
	150	+0.2 ~ +3.0	26.44	S



PTFE

Product Information



Material PTFE pure / Teflon virginal

The plastic with the highest resistance to chemicals and extremely low adhesion, Teflon / PTFE is a soft sintered material with a low level of mechanical resistance. Its most important properties are: resistance to almost all chemicals, very high continuous service temperature, 260 °C flame retardance, low coefficient of friction, extremely low adhesion, low strength and hardness and high frictional wear.

Other designations:

Teflon, PTFE, Teflon virginal, PTFE pure

PTFE can be supplied in the following modifications:

- PTFE Mod. 15% glass
- PTFE Mod. 15% graphite
- PTFE Mod. 15% coal
- PTFE Mod. 25% glass
- PTFE Mod. 25% coal
- PTFE Mod. 5% glass + 10% graphite
- PTFE Mod. 5% glass + 10% coal

Standard colour:

Natural

Areas of application:

- Seals, coatings or plain bearings
(if a low frictional resistance is required, but no wear stress occurs)

PTFE

Product Charts



Sheets

Sheets PTFE	Thickness mm	Weight kg/item	Availability
1000 x 1000 mm	5	12.00	S
	6	14.40	S
	8	19.20	S
	10	24.00	S
	12	28.80	S
	15	36.00	S
	20	48.00	S
	25	60.00	S
	30	72.00	S
	35	84.00	S
	40	96.00	S
	45	108.00	S
	50	120.00	S
	55	132.00	S
	60	144.00	S
	70	168.00	S
80	192.00	S	
90	216.00	S	
100	240.00	S	

Sheets PTFE	Thickness mm	Weight kg/item	Availability
1200 x 1200 mm	5	17.28	MTO
	6	20.74	MTO
	8	27.65	MTO
	10	34.56	MTO
	12	41.47	MTO
	15	51.84	MTO
	20	69.12	MTO
	25	86.40	MTO
	30	103.68	MTO
	35	120.96	MTO
	40	138.24	MTO
	45	155.52	MTO
	50	172.80	MTO
	55	190.08	MTO
	60	207.36	MTO
	70	241.92	MTO
80	276.48	MTO	
90	311.04	MTO	
100	345.60	MTO	

Sheets PTFE	Thickness mm	Weight kg/item	Availability
1500 x 1500 mm	8	43.20	MTO
	10	54.00	MTO
	12	64.80	MTO
	15	81.00	MTO
	20	108.00	MTO
	30	162.00	MTO
	40	216.00	MTO
	50	270.00	MTO

Sheets PTFE	Thickness mm	Weight kg/item	Availability
2000 x 1000 mm	6	28.80	S
	8	38.40	S
	10	48.00	S
	12	57.60	S
	15	72.00	S
	20	96.00	S
	25	120.00	S
	30	144.00	S
	40	192.00	S

PTFE is billed according to actual delivery weight.

PTFE

Product Charts

Skived sheets



Skived sheets PTFE	Thickness mm	Weight kg/item	Availability
1000 x 1000 mm	0.5	1.15	MTO
	1	2.30	MTO
	2	4.60	MTO
	3	6.90	MTO
	4	9.20	MTO

Skived sheets PTFE	Thickness mm	Weight kg/item	Availability
1200 x 1200 mm	0.5	1.66	MTO
	1	3.31	MTO
	2	6.62	MTO
	3	9.94	MTO
	4	13.25	MTO

Skived sheets PTFE	Thickness mm	Weight kg/item	Availability
1500 x 1500 mm	1	5.18	MTO
	2	10.35	MTO
	3	15.53	MTO
	4	20.70	MTO

Skived sheets PTFE	Thickness mm	Weight kg/item	Availability
2000 x 1000 mm	1	4.60	MTO
	2	9.20	MTO
	3	13.80	MTO
	4	18.40	MTO

Round Bars



Round Bars PTFE	Ø mm	Weight kg/item L = 1000 mm	Availability
	10	0.18	S
	15	0.41	S
	20	0.72	S
	25	1.13	S
	30	1.62	S
	35	2.21	S
	40	2.89	S
	45	3.66	S
	50	4.51	S
	55	5.46	S
	60	6.50	S
	65	7.63	S
	70	8.85	S
	75	10.16	S
	80	11.56	S
	85	13.04	S
	90	14.62	S
	95	16.29	S
	100	18.06	S
	110	21.85	S
	120	26.00	S
	130	30.51	S
	140	35.39	S
	150	40.62	S
	160	46.22	S

PTFE is billed according to actual delivery weight.



PVDF

Product Information



Our PVDF quality plastics

PVDF is a high-performance fluoropolymer known for its exceptional chemical resistance, mechanical properties, and thermal stability. Compared to other fluoropolymers, PVDF offers easier melt processing due to its relatively low melting point of around 338°F (170°C). This versatile polymer finds applications across a wide range of industries, including chemical processing, semiconductor manufacturing, automotive, construction, and aerospace.

Areas of application for PVDF:

PVDF is commonly used in various forms such as films, coatings, pipes, tubes, fittings, membranes, and wire insulation. Its versatility and unique properties make it an ideal choice for challenging industrial applications where performance and reliability are critical.

Characteristics:

- Chemical Resistance
- Thermal Stability
- Mechanical Properties
- Weatherability
- Electrical Properties
- Low Flammability

PVDF Product Charts



Sheets



Sheets PVDF	Thickness mm	Weight kg/item	Availability
2000 × 1000 mm	2	7.20	S
	3	10.80	S
	4	14.40	S
	5	18.00	S
	6	21.60	S
	8	28.80	S
	10	36.00	S
	12	43.20	S
	15	54.00	S
	20	74.00	S
	25	92.00	S
	30	110.00	S
	35	128.00	S
	40	146.00	S

Round Bars

Round Bars PVDF	Ø mm	Weight kg/item L = 1000 mm	Availability
	20	0.60	S
	25	0.90	S
	30	1.40	S
	35	1.80	S
	40	2.30	S
	45	2.85	S
	50	3.60	S
	60	5.40	S
	65	6.00	S
	70	7.10	S
	75	8.00	S
	80	9.30	S
	90	11.70	S
	100	14.45	S
	120	20.25	S
	150	32.00	S

Colours: Natural

Other colours available on request

For other dimensions, please contact us directly.

ETFE

Product Information



Our ETFE (Ethylene Tetrafluoroethylene)

Is a high-performance fluoropolymer known for its excellent chemical resistance, high toughness and outstanding weathering resistance. It combines very good mechanical strength with a wide operating temperature range and is suitable for demanding chemical, electrical and architectural applications.

Applications of ETFE:

- Extruded sheets, rods, tubes and films
- Linings and protective layers
- Chemical equipment and tank components
- Electrical insulation components
- Architectural films and membranes
- Precision parts for chemically demanding environments

Characteristics:

- Excellent chemical resistance
- High mechanical strength and toughness
- Very good weather and UV resistance
- Wide operating temperature range: approx. -200 °C to +150 °C
- Good electrical insulation properties
- Low density
- Low coefficient of friction
- Non-stick surface
- High transparency in film applications
- Radiation resistance

Sheets



Round Bars

SHEETS ETFE	Thickness mm	Weight kg/item	Availability
2000 x 1000 mm	2	8.00	S
	3	12.00	S
	4	16.00	S
	5	20.00	S
	6	24.00	S
	8	32.00	S
	10	40.00	S
	12	48.00	S
	15	60.00	S
	20	80.00	S
	25	100.00	S
	30	120.00	S
	35	140.00	S
	40	160.00	S
	50	200.00	S
	60	240.00	S
	70	280.00	S
	80	320.00	S
	90	360.00	S
	100	400.00	S

ROUND BARS ETFE	Ø mm	Weight kg/item L = 1000 mm	Avail- ability
	10	0.16	S
	12	0.23	S
	15	0.35	S
	20	0.63	S
	25	0.98	S
	30	1.41	S
	35	1.92	S
	40	2.51	S
	50	3.93	S
	60	5.65	S
	70	7.69	S
	80	10.05	S
	90	12.72	S
	100	15.70	S
	110	19.00	S
	120	22.61	S
	130	26.53	S
	150	35.33	S
	160	40.19	S
	180	50.87	S

Colours:

Natural

Other colours available on request

For further dimensions, please contact us directly.



PA6 FR-V0

Product Information



Flame retardant polyamide 6 for special applications according to UL94 V0 and rail applications according to DIN EN 45545-2

With our Comco-PA6 FR-V0, Comco EPP offers you an unreinforced, flame-retardant polyamide 6 suitable for special applications. The material, listed to UL94 in V0, is based on a flame retardant system that is free of red phosphorus and halogen. Through a special manufacturing process, we have achieved improved homogeneity and thus improved machinability. Our Comco-PA6 FR-V0 meets the requirements for public rail transport according to DIN EN 45545-2 and is also suitable for other industrial applications where special fire behaviour is required.

Standard colours: black, natural available on request!

Areas of application:

- Public rail transport (according to DIN EN 45545-2).
E.g. cable clamps, sliding elements, emergency spring washers
- Industrial applications with special fire behaviour.
E.g. shipbuilding, mining, oil & gas, vehicle construction, etc.

Approvals

Standard:	Classification:
– UL94	V0
– EN45545-2 (02/2016; 10/2020)	R22, R23, R24, R26

Further approvals on request!

Delivery programme

Sheets: 3000 x 620, 2000 x 1000 mm
Thicknesses: 5, 6, 8, 10, 16, 20, 25, 30, 40, 50, 60 mm

Round rods: Drm. x 3000 mm
Diameter: On request!

Other thicknesses on request!

PA6 FR-V0

Product Charts



Sheets

SHEETS PA6 FR-V0	Thickness mm	Tolerance mm	Weight kg / item	Avail- ability
3000 x 620 mm	5	+0.1 ~ +1.0	11.40	MTO
	6	+0.1 ~ +1.0	13.70	MTO
	8	+0.1 ~ +1.0	18.25	MTO
	10	+0.1 ~ +2.0	24.30	MTO
	16	+0.1 ~ +2.0	38.90	MTO
	20	+0.1 ~ +2.0	47.70	MTO
	25	+0.1 ~ +2.0	59.65	MTO
	30	+0.1 ~ +3.0	71.90	MTO
	40	+0.1 ~ +3.0	94.70	S
	50	+0.1 ~ +3.0	118.40	S
	60	+0.1 ~ +3.0	142.10	S

SHEETS PA6 FR-V0	Thickness mm	Tolerance mm	Weight kg / item	Avail- ability
2000 x 1000 mm	5	+0.1 ~ +1.0	12.26	S
	6	+0.1 ~ +1.0	14.73	S
	8	+0.1 ~ +1.0	19.62	S
	10	+0.1 ~ +2.0	26.13	S
	16	+0.1 ~ +2.0	41.83	S
	20	+0.1 ~ +2.0	51.29	S
	30	+0.1 ~ +3.0	77.31	S

For further dimensions, please contact us directly.

Colours:

black, natural available on request!



PA6.6

Product Information



Our PA 6.6 – quality plastic

Compared to PA 6, PA 6.6 has a slightly higher surface hardness and rigidity, as well as reduced moisture absorption. Further positive features include increased wear and heat resistance, but it has a lower toughness compared to PA 6.

One popular modification is the 30% glass fibre reinforcement. PA 6.6 GF 30 features increased dimensional stability, very high rigidity and even greater heat resistance compared to unreinforced versions.

Application areas for PA 6.6:

- Mechanical engineering
- Aircraft construction
- Electrical appliance industry
- Automobile industry
- Equipment manufacturing

Product Information / Product Charts



Characteristics:

- Good dimensional stability
- Very good antifriction properties
- High abrasion resistance
- Exceptionally high strength and hardness across a wide range of temperatures
- Very good machinability
- Good self-adhesive properties
- Good weldability
- High continuous service temperature

Colour:

natural and PA 6.6 GF 30 in black

Sheets



SHEETS PA 6.6	Thickness mm	Tolerance mm	Weight kg/item	Avail- ability
3000 x 610 mm	8	+0.2 / +0.9	18.45	S
	10	+0.2 / +0.9	22.77	S
	12	+0.3 / +1.5	27.84	S
	15	+0.3 / +1.5	34.35	S
	16	+0.3 / +1.5	36.45	S
	20	+0.3 / +1.5	45.15	S
	25	+0.3 / +1.5	55.95	S
	30	+0.5 / +2.5	67.95	S
	35	+0.5 / +2.5	78.75	MTO
	40	+0.5 / +2.5	89.55	S
	45	+0.5 / +2.5	100.35	MTO
	50	+0.5 / +2.5	111.15	S
	60	+0.5 / +3.5	133.80	MTO
	70	+0.5 / +3.5	155.40	MTO
	80	+0.5 / +5.0	178.65	MTO
	90	+0.5 / +5.0	200.25	MTO
	100	+0.5 / +5.0	221.85	MTO

Round Bars

ROUND BARS PA 6.6	Ø mm	Tolerance mm	Weight kg/item	Avail- ability
L = 3000 mm	2	+0.1 ~ +0.4	0.08	MTO
	6	+0.1 ~ +0.4	0.11	S
	8	+0.1 ~ +0.5	0.19	MTO
	10	+0.1 ~ +0.5	0.29	S
	12	+0.2 ~ +0.7	0.42	S
	14	+0.2 ~ +0.7	0.57	MTO
	15	+0.2 ~ +0.7	0.65	S
	16	+0.2 ~ +0.7	0.74	S
	18	+0.2 ~ +0.7	0.93	MTO
	20	+0.2 ~ +0.7	1.14	S
	22	+0.2 ~ +0.9	1.39	MTO
	25	+0.2 ~ +0.9	1.79	S
	28	+0.2 ~ +0.9	2.22	MTO
	30	+0.2 ~ +0.9	2.55	S
	32	+0.2 ~ +1.1	2.91	MTO
	36	+0.2 ~ +1.1	3.66	S
	40	+0.2 ~ +1.1	4.50	S
	45	+0.3 ~ +1.3	5.73	S
	50	+0.3 ~ +1.3	7.05	S
	56	+0.3 ~ +1.3	8.79	MTO
	60	+0.3 ~ +1.6	10.14	S
	65	+0.3 ~ +1.6	11.85	MTO
	70	+0.3 ~ +1.6	13.71	S
	75	+0.4 ~ +2.0	15.84	MTO
	80	+0.4 ~ +2.0	17.97	S
	85	+0.5 ~ +2.2	20.34	MTO
	90	+0.5 ~ +2.2	22.74	S
	95	+0.6 ~ +2.5	25.41	MTO
	100	+0.6 ~ +2.5	28.11	S
	110	+0.7 ~ +3.0	34.05	S
	120	+0.8 ~ +3.5	40.65	MTO
	125	+0.8 ~ +3.5	44.10	MTO
	130	+0.9 ~ +3.8	47.70	MTO
	140	+0.9 ~ +3.8	55.20	MTO
	150	+1.0 ~ +4.2	63.45	MTO
	160	+1.1 ~ +4.5	72.30	MTO
	170	+1.2 ~ +5.0	81.75	MTO
	180	+1.2 ~ +5.0	91.35	MTO
	190	+1.3 ~ +5.5	102.00	MTO
	200	+1.3 ~ +5.5	112.80	MTO
	220	+1.3 ~ +5.8	136.20	MTO
	250	+1.5 ~ +6.2	175.65	MTO

PA6.6 GF30

Product Charts

Sheets



SHEETS PA 6.6 GF30	Thickness mm	Tolerance mm	Weight kg/item	Avail- ability
3000 x 625 mm	10	+0.2 ~ +0.9	26.52	S
	15	+0.3 / +1.5	39.90	S
	20	+0.3 / +1.5	52.50	S
	25	+0.3 / +1.5	65.10	S
	30	+0.5 / +2.5	79.20	S
	40	+0.5 / +2.5	104.40	S
	50	+0.5 / +2.5	129.45	S
	60	+0.5 / +3.5	155.85	S
	70	+0.5 / +3.5	181.05	MTO
	80	+0.5 / +5.0	208.05	S
	90	+0.5 / +5.0	233.10	MTO
	100	+0.5 / +5.0	258.30	S

Round Bars



ROUND BARS PA 6.6 GF30	Ø mm	Tolerance mm	Weight kg/item	Avail- ability
L = 3000 mm	10	+0.1 / +0.5	0.33	MTO
	12	+0.2 / +0.7	0.49	MTO
	15	+0.2 / +0.7	0.75	S
	16	+0.2 / +0.7	0.85	MTO
	18	+0.2 ~ +0.7	1.07	MTO
	20	+0.2 ~ +0.7	1.31	S
	22	+0.2 / +0.9	1.59	MTO
	25	+0.2 / +0.9	2.04	S
	28	+0.2 / +0.9	2.55	MTO
	30	+0.2 / +0.9	2.91	S
	32	+0.2 / +1.1	3.33	MTO
	36	+0.2 / +1.1	4.20	S
	40	+0.2 / +1.1	5.16	S
	45	+0.3 / +1.3	6.54	MTO
	50	+0.3 / +1.3	8.04	S
	60	+0.3 / +1.6	11.58	S
	70	+0.3 / +1.6	15.66	S
	80	+0.4 / +2.0	20.52	S
	90	+0.5 / +2.2	25.98	MTO
	100	+0.6 / +2.5	32.10	S
	110	+0.7 / +3.0	39.00	MTO
	120	+0.8 / +3.5	46.50	S
	125	+0.8 / +3.5	50.40	MTO
	130	+0.9 / +3.8	54.60	MTO
	140	+0.9 / +3.8	63.15	MTO
	150	+1.0 / +4.2	72.60	S
	180	+1.2 / +5.0	104.55	S
	200	+1.3 / 5.5	128.85	S



PE 1000 / PE 1000 Regenerate

Product Information



Material PE 1000/PE-UHMW

This is a technical plastic used in many industrial fields to solve frictional and mechanical problems as well as material flow problems. The PE 1000 polyethylene product family is characterised by extreme wear resistance, high impact strength as well as excellent resistance to chemicals. These products have become well established in technical applications. It is an ultra-high molecular polyethylene, with a molecular weight of 4,000,000–9,000,000.

Other designations:

PE-UHMW, RCH1000

.....

Material PE 1000 Reg.

These materials have been developed for technical applications, especially in the field of mechanical engineering. Our Regenerate type is made of ultra-high molecular polyethylene powder and finely ground PE 1000.

Applications of PE 1000/PE-UHMW/PE1000 Reg.:

- Our materials PE1000 & PE1000 Reg. are ideal for a multitude of different components in general mechanical engineering, such as sliding and conveying elements, carriers, screw conveyors etc.

Characteristics:

- Very high wear and abrasion resistance
- Low coefficient of sliding friction
- Very high notched bar impact strength

Other designations:

PE-UHMW R

PE 1000

Product Charts



Sheets

SHEETS PE 1000	Thick-ness mm	Tolerance mm	Weight kg/item	Avail-ability
2000 x 1000 mm	1	+0 ~ +0.4	2.30	S
	2	-0.2 ~ +0.2	3.84	S
	3	-0.2 ~ +0.2	5.76	S
	4	-0.2 ~ +0.2	7.68	S
	5	-0.3 ~ +0.3	9.60	S
	6	-0.3 ~ +0.3	11.52	S
	8	-0.2 ~ +0.2	15.40	S
	10	-0.2 ~ +0.2	19.20	S
	12	-0.2 ~ +0.2	23.00	S
	15	-0.2 ~ +0.2	28.80	S
	20	-0.2 ~ +0.2	38.40	S
	25	-0.2 ~ +0.2	48.00	S
	30	-0.2 ~ +0.2	57.60	S
	35	-0.3 ~ +0.3	67.20	S
	40	-0.3 ~ +0.3	76.80	S
50	-0.3 ~ +0.3	96.00	S	
60	-0.3 ~ +0.3	115.20	S	
70	-0.3 ~ +0.3	134.40	MTO	
80	-0.3 ~ +0.3	153.60	S	
90	-0.3 ~ +0.3	172.80	MTO	
100	-0.3 ~ +0.3	192.00	S	
110	-0.3 ~ +0.3	211.20	MTO	
120	-0.3 ~ +0.3	230.40	MTO	
130	-0.5 ~ +0.5	249.60	MTO	
140	-0.5 ~ +0.5	268.80	MTO	
150	-0.5 ~ +0.5	288.00	MTO	

SHEETS PE 1000	Thick-ness mm	Tolerance mm	Weight kg/item	Avail-ability
3000 x 1250	8	-0.2 ~ +0.2	28.80	MTO
	10	-0.2 ~ +0.2	36.00	S
	12	-0.2 ~ +0.2	43.20	S
	15	-0.2 ~ +0.2	54.00	S
	20	-0.2 ~ +0.2	72.00	S
	25	-0.2 ~ +0.2	90.00	S
	30	-0.2 ~ +0.2	108.00	S
	35	-0.3 ~ +0.3	126.00	MTO
	40	-0.3 ~ +0.3	144.00	S
	50	-0.3 ~ +0.3	180.00	MTO
	60	-0.3 ~ +0.3	216.00	MTO
	70	-0.3 ~ +0.3	252.00	MTO
	80	-0.3 ~ +0.3	288.00	MTO
	90	-0.3 ~ +0.3	324.00	MTO
	100	-0.3 ~ +0.3	360.00	MTO
110	-0.3 ~ +0.3	396.00	MTO	

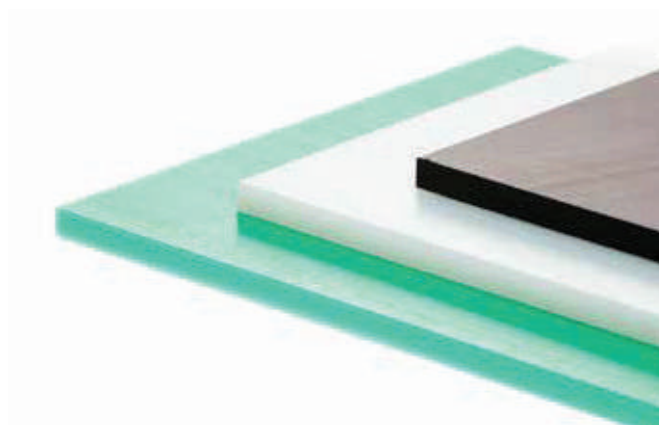
Colours:

Natural, green, black

Other colours available on request

Special designs:

PE 1000 AST, PE 1000 MoS, PE 1000 UV



PE 1000

Product Charts

Round Bars



ROUND BARS PE 1000	Ø mm	Tolerance mm	Weight kg/item	Availability
L=2000 mm	10	+0.1 ~ +0.6	0.16	S
	15	+0.2 ~ +0.8	0.36	S
	20	+0.2 ~ +1.2	0.64	S
	25	+0.2 ~ +1.2	0.98	S
	30	+0.2 ~ +1.2	1.40	S
	35	+0.2 ~ +1.3	1.94	S
	40	+0.2 ~ +1.5	2.48	S
	45	+0.3 ~ +2.0	3.14	S
	50	+0.3 ~ +2.0	3.90	S
	55	+0.3 ~ +2.0	4.58	MTO
	60	+0.3 ~ +2.3	5.60	S
	65	+0.3 ~ +2.5	6.54	MTO
	70	+0.3 ~ +2.5	7.60	S
	75	+0.4 ~ +3.0	8.72	MTO
	80	+0.4 ~ +3.0	9.90	S
	85	+0.5 ~ +3.4	10.56	MTO
	90	+0.5 ~ +3.4	12.52	S
	100	+0.6 ~ +3.8	15.46	S
	110	+0.7 ~ +4.2	18.66	MTO
	120	+0.8 ~ +4.6	22.46	S
	125	+0.8 ~ +4.6	24.10	MTO
	130	+0.9 ~ +5.4	26.26	S
	140	+0.9 ~ +5.4	30.26	S
	150	+1.0 ~ +5.8	34.76	S
	160	+1.1 ~ +6.3	39.52	S
	180	+1.2 ~ +7.4	49.98	S
	200	+1.3 ~ +8.5	62.62	S

Colours:

Natural, green, black

Other colours available on request

For further dimensions, please contact us directly. We can supply finished parts, semi-finished products and cut-to-size parts made of PE 1000 and PE 1000 regenerate.



PE 1000 Regenerate

Product Charts



Sheets

SHEETS PE 1000 REG	Thick- ness mm	Tolerance mm	Weight kg/item	Avail- ability
2000 x 1000 mm	8	-0.2 ~ +0.2	15.40	MTO
	10	-0.2 ~ +0.2	19.20	S
	12	-0.2 ~ +0.2	23.00	S
	15	-0.2 ~ +0.2	28.80	S
	20	-0.2 ~ +0.2	38.40	S
	25	-0.2 ~ +0.2	48.00	S
	30	-0.2 ~ +0.2	57.60	S
	35	-0.3 ~ +0.3	67.20	MTO
	40	-0.3 ~ +0.3	76.80	S
	50	-0.3 ~ +0.3	96.00	S
	60	-0.3 ~ +0.3	115.20	S
	70	-0.3 ~ +0.3	134.40	MTO
	80	-0.3 ~ +0.3	153.60	MTO
	90	-0.3 ~ +0.3	172.80	MTO
	100	-0.3 ~ +0.3	192.00	MTO
	110	-0.3 ~ +0.3	211.20	MTO
	120	-0.3 ~ +0.3	230.40	MTO
	130	-0.5 ~ +0.5	249.60	MTO
	140	-0.5 ~ +0.5	268.80	MTO
	150	-0.5 ~ +0.5	288.00	MTO

SHEETS PE 1000 REG	Thick- ness mm	Tolerance mm	Weight kg/item	Avail- ability
3000 x 1250	8	-0.2 ~ +0.2	28.80	MTO
	10	-0.2 ~ +0.2	36.00	S
	12	-0.2 ~ +0.2	43.20	S
	15	-0.2 ~ +0.2	54.00	S
	20	-0.2 ~ +0.2	72.00	S
	25	-0.2 ~ +0.2	90.00	S
	30	-0.2 ~ +0.2	108.00	S
	35	-0.3 ~ +0.3	126.00	MTO
	40	-0.3 ~ +0.3	144.00	S
	50	-0.3 ~ +0.3	180.00	MTO
	60	-0.3 ~ +0.3	216.00	MTO
	70	-0.3 ~ +0.3	252.00	MTO
	80	-0.3 ~ +0.3	288.00	MTO
	90	-0.3 ~ +0.3	324.00	MTO
	100	-0.3 ~ +0.3	360.00	MTO
	110	-0.3 ~ +0.3	396.00	MTO

Colours:

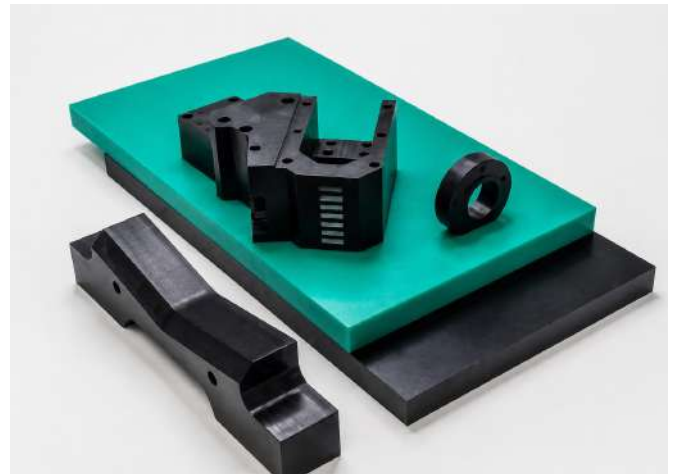
Black, green

Other colours available on request

Special designs:

AST, slide

For further dimensions,
please contact us directly.



PE 500 / PE 500 Regenerate

Product Information

Material PE 500 / PE-HMW

The materials of the polyethylene PE 500 product family are characterised by excellent sliding properties, extreme wear resistance, high impact strength as well as excellent resistance to chemicals. They have become well established in technical applications. A high-molecular polyethylene with a molecular weight of over 500,000.

Other designations:

PE-HMW, RCH500

.....

Material PE 500 Reg.

PE 500 Regenerate is made of finely ground PE 500 and PE 1000.

PE 500 Reg. is characterised by high impact strength and has proven itself for many technical applications. A high-molecular polyethylene with a molecular weight of over 500,000.

Applications of PE 500 / PE 500 Reg.:

- COMCO-Premium 500 is a high-molecular polyethylene characterised by good mechanical properties such as scratch and cut resistance and very good resistance to acids. The material is used in branches such as the slaughterhouse/food industry, but also in shop-floor and cold store construction.

Characteristics:

- Increased mechanical properties
- Good sliding and wear properties
- High cut and scratch resistance
- Physiologically harmless

Other designations:

PE-HMW-R, RCH500, PE 500 Regenerate, PE-HMW-Regenerate





PE 500

Product Charts

Sheets



SHEETS PE 500	Thick-ness mm	Tolerance mm	Weight kg/item	Avail-ability
2000 x 1000 mm	1	+0 ~ +0.4	1.96	MTO
	2	-0.2 ~ +0.2	3.92	S
	3	-0.2 ~ +0.2	5.88	S
	4	-0.2 ~ +0.2	7.78	S
	5	-0.3 ~ +0.3	9.80	S
	6	-0.3 ~ +0.3	11.76	S
	8	-0.2 ~ +0.2	15.70	S
	10	-0.2 ~ +0.2	19.60	S
	12	-0.2 ~ +0.2	23.50	S
	15	-0.2 ~ +0.2	29.40	S
	20	-0.2 ~ +0.2	39.20	S
	25	-0.2 ~ +0.2	49.00	S
	30	-0.2 ~ +0.2	58.80	S
	35	-0.3 ~ +0.3	68.60	S
	40	-0.3 ~ +0.3	78.40	S
	50	-0.3 ~ +0.3	98.00	S
	60	-0.3 ~ +0.3	117.60	S
	70	-0.3 ~ +0.3	137.20	S
	80	-0.3 ~ +0.3	156.80	S
	90	-0.3 ~ +0.3	176.40	S
	100	-0.3 ~ +0.3	196.00	S
	110	-0.3 ~ +0.3	215.60	MTO
	120	-0.3 ~ +0.3	235.20	MTO
	130	-0.5 ~ +0.5	254.80	MTO
	140	-0.5 ~ +0.5	274.40	MTO
	150	-0.5 ~ +0.5	294.00	MTO

SHEETS PE 500	Thick-ness mm	Tolerance mm	Weight kg/item	Avail-ability
3000 x 1250 mm	8	-0.2 ~ +0.2	29.40	MTO
	10	-0.2 ~ +0.2	36.80	S
	12	-0.2 ~ +0.2	44.10	S
	15	-0.2 ~ +0.2	55.10	S
	20	-0.2 ~ +0.2	73.50	S
	25	-0.2 ~ +0.2	91.90	S
	30	-0.2 ~ +0.2	110.30	S
	35	-0.3 ~ +0.3	128.60	S
	40	-0.3 ~ +0.3	147.00	S
	50	-0.3 ~ +0.3	183.80	S
	60	-0.3 ~ +0.3	220.50	S
	70	-0.3 ~ +0.3	257.30	MTO
	80	-0.3 ~ +0.3	294.00	MTO
	90	-0.3 ~ +0.3	330.80	MTO
	100	-0.3 ~ +0.3	367.50	MTO
	110	-0.3 ~ +0.3	404.30	MTO

Colours:

Natural, black, yellow, reddish brown,
red, blue, green, grey
Other colours available on request

Special designs:

PE 500 UV

We can supply finished parts manufactured according to your drawings, semi-finished products and blanks.

We can deliver finished parts, plates and blanks made of PE 500.

PE 500 Regenerate Product Charts



Sheets

SHEETS PE 500 REG	Thick- ness mm	Tolerance mm	Weight kg/item	Avail- ability
2000 x 1000 mm	8	-0.2 ~ +0.2	15.70	MTO
	10	-0.2 ~ +0.2	19.60	MTO
	12	-0.2 ~ +0.2	23.50	MTO
	15	-0.2 ~ +0.2	29.40	MTO
	20	-0.2 ~ +0.2	39.20	MTO
	25	-0.2 ~ +0.2	49.00	MTO
	30	-0.2 ~ +0.2	58.80	MTO
	35	-0.3 ~ +0.3	68.60	MTO
	40	-0.3 ~ +0.3	78.40	MTO
	50	-0.3 ~ +0.3	98.00	MTO
	60	-0.3 ~ +0.3	117.60	MTO
	70	-0.3 ~ +0.3	137.20	MTO
	80	-0.3 ~ +0.3	156.80	MTO
	90	-0.3 ~ +0.3	176.40	MTO
	100	-0.3 ~ +0.3	196.00	MTO
	110	-0.3 ~ +0.3	215.60	MTO
	120	-0.3 ~ +0.3	235.20	MTO
	130	-0.5 ~ +0.5	254.80	MTO
	140	-0.5 ~ +0.5	274.40	MTO
	150	-0.5 ~ +0.5	294.00	MTO

SHEETS PE 500 REG	Thick- ness mm	Tolerance mm	Weight kg/item	Avail- ability
3000 x 1250 mm	8	-0.2 ~ +0.2	29.40	MTO
	10	-0.2 ~ +0.2	36.80	MTO
	12	-0.2 ~ +0.2	44.10	MTO
	15	-0.2 ~ +0.2	55.10	MTO
	20	-0.2 ~ +0.2	73.50	MTO
	25	-0.2 ~ +0.2	91.90	MTO
	30	-0.2 ~ +0.2	110.30	MTO
	35	-0.3 ~ +0.3	128.60	MTO
	40	-0.3 ~ +0.3	147.00	MTO
	50	-0.3 ~ +0.3	183.80	MTO
	60	-0.3 ~ +0.3	220.50	MTO
	70	-0.3 ~ +0.3	257.30	MTO
	80	-0.3 ~ +0.3	294.00	MTO
	90	-0.3 ~ +0.3	330.80	MTO
	100	-0.3 ~ +0.3	367.50	MTO
	110	-0.3 ~ +0.3	404.30	MTO

Colours:

Green, black, black-multi, confetti
Other colours available on request

For further dimensions contact,
please contact us directly.

We can deliver finished parts, plates
and blanks made of PE 500 Reg.

ABS

Product Information



Our ABS quality plastics

This material offers ideal properties required for the production of prototype designs. Its residual stress is completely eliminated by the unique tempering process, which also results in excellent machinability and dimensional stability. ABS sheets are easy to process.

Applications of ABS:

- Applications for model production of prototypes

Characteristics:

- Excellent machinability
- Excellent dimensional stability
- Various sizes and dimensions

Sheets



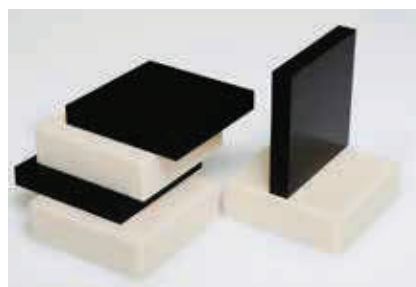
SHEETS ABS	Thick- ness mm	Tolerance mm	Weight			Availability
			kg/item 600 × 1200	kg/item 1000 × 1200	kg/item 1200 × 2400	
3000 x 625 mm	10	+0,1 ~ +2,0	7,92	13,20	31,68	MTO
	12	+0,1 ~ +2,0	9,50	15,84	38,02	MTO
	15	+0,5 ~ +2,5	11,88	19,80	47,52	MTO
	18	+0,5 ~ +2,5	14,26	23,76	57,02	MTO
	20	+1,0 ~ +3,0	15,84	26,40	63,36	MTO
	22	+1,0 ~ +3,0	17,42	29,04	69,70	MTO
	25	+1,0 ~ +3,0	19,80	33,00	79,20	MTO
	28	+1,0 ~ +3,0	22,18	36,96	88,70	MTO
	30	+1,5 ~ +3,5	23,76	39,60	95,04	MTO
	32	+1,5 ~ +3,5	25,34	42,24	101,38	MTO
	35	+1,5 ~ +3,5	27,72	46,20	110,88	MTO
	38	+1,5 ~ +3,5	30,10	50,16	120,38	MTO
	40	+1,5 ~ +3,5	31,68	52,80	126,72	MTO
	42	+1,5 ~ +3,5	33,26	55,44	133,06	MTO
	45	+1,5 ~ +3,5	35,64	59,40	142,56	MTO
	48	+1,5 ~ +3,5	38,02	63,36	152,06	MTO
	50	+1,5 ~ +3,5	39,60	66,00	158,40	MTO
	55	+1,5 ~ +3,5	43,56	72,60	174,24	MTO
	60	+1,5 ~ +4,0	47,52	79,20	190,08	MTO
	65	+1,5 ~ +4,0	51,48	85,80	205,92	MTO
	70	+1,5 ~ +4,5	55,44	92,40	221,76	MTO
	80	+1,5 ~ +4,5	63,36	105,60	253,44	MTO
	90	+1,5 ~ +6,0	71,28	118,80	285,12	MTO
	100	+1,5 ~ +6,0	79,20	132,00	316,80	MTO
	120	+2,0 ~ +7,0	95,04	-	-	MTO
	150	+2,0 ~ +7,0	118,80	-	-	MTO
	200	+2,0 ~ +7,0	158,40	-	-	MTO

Colours:

Natural, black

Other colours available on request

For other dimensions,
please contact us directly.



ABS and ABS-NAT/BLK are available in sheets, rods, blanks and finished parts manufactured according to your drawings. In addition, we can supply a range of variants tailored to the special technical requirements of our customers.

PEI

Product Information



Our PEI quality plastics

This semi-transparent amorphous thermoplastic offers excellent steam and water vapour properties, heat resistance and extraordinary dielectric properties. Its constant operating temperature is about 170 °C. PEI is ideal for applications that require reliable resilience and stability at high temperatures.

Applications of PEI:

- Components exposed to microwaves
- Electric insulating components
- Components of glass production equipment
- Components of steam jet cleaning devices
- Heat insulating hoses

Characteristics:

- High heat resistance
- High steam resistance
- Excellent dielectric strength
- Non-flammable

Please note that due to the characteristics of non-crystalline plastics, PEI has relatively low chemical resistance, creep resistance and wear resistance. Grooved areas such as corners or edges should be rounded to avoid cracking and chipping.

Sheets

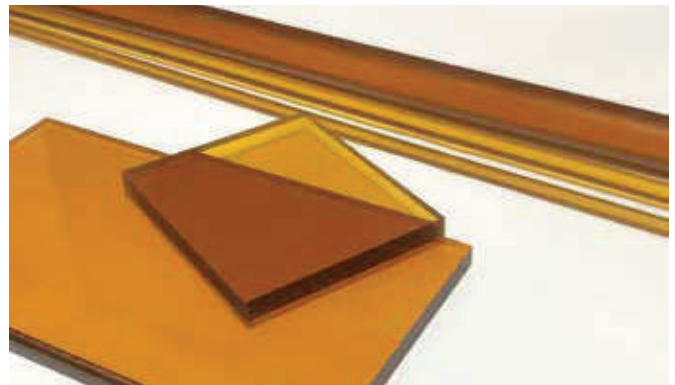
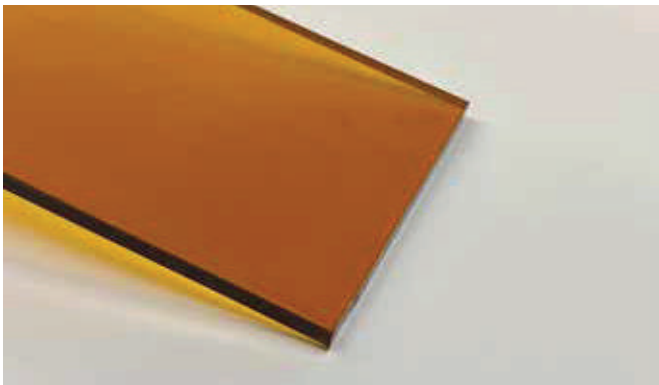


Round Bars



SHEETS PEI	Thick- ness mm	Weight kg/item	Avail- ability
1250 x 620 mm	10	11.14	S
	15	16.20	S
	20	21.26	S
	25	26.32	S
	30	31.38	S
	35	36.45	S
	40	41.51	S
	45	46.57	S
	50	51.63	S

ROUND BARS PEI	Ø mm	Weight kg/item L=1000mm	Avail- ability
	20	0.49	S
	25	0.74	S
	30	1.04	S
	35	1.40	S
	40	1.80	S
	45	2.25	S
	50	2.76	S
	55	3.32	S
	60	3.92	S
	65	4.58	S
	70	5.29	S
	75	6.05	S
	80	6.86	S



Colours:

Natural, black

Other colours available on request

For further dimensions, please contact us directly.

PEI is available in sheets, rods, blanks and finished parts manufactured according to your drawings. In addition, we supply a range of variants tailored to the special technical requirements of our customers.

PPSU / PPSU MG

Product Information



Our PPSU (Polyphenylsulfone)

is a high-performance, amorphous thermoplastic known for its excellent thermal stability, toughness, and resistance to repeated steam sterilization. It is widely used in medical, aerospace, and plumbing applications.

Characteristics:

- High heat resistance
- Excellent Hydrolysis Resistance
- Superior Impact Strength
- Chemical Resistance
- Biocompatibility
- Dimensional Stability

PPSU Variants

PPSU (General Grade)

is a tough, amorphous thermoplastic with excellent heat and hydrolysis resistance. It is a preferred material for applications requiring repeated sterilization and resistance to aggressive chemicals.

Application for PPSU:

- Plumbing
- Aerospace
- Food and beverages
- Membrane Housing & Water Filtration

PPSU (Medical Grade)

is a high-performance plastic specifically formulated for demanding medical and healthcare applications. It offers excellent sterilization resistance, mechanical strength, and biocompatibility. It's a polyphenolsulfone (PPSU) product offering a balance of properties including chemical resistance, impact strength, and thermal stability.

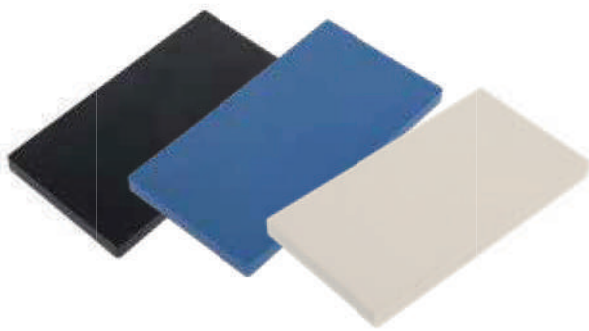
Application for PPSU:

- Surgical and dental
- Sterilization trays
- Endoscopic componets
- Orthopedic implants

Sheets



SHEETS PPSU	Thickness mm	Weight kg/item	Avail- ability
1250 x 620 mm	10	11.05	S
	12	13.06	S
	15	16.07	S
	20	21.10	S
	25	26.12	S
	30	31.14	S
	35	36.16	S
	40	41.19	S
	45	46.21	S
	50	51.23	S
	55	56.26	S



Colours:

White, Black and Blue
Other colours available on request

Round Bars



ROUND BARS PPSU	Ø mm	Weight kg/item L = 1000 mm	Avail- ability
	15	0.29	S
	20	0.49	S
	25	0.74	S
	32	1.17	S
	35	1.39	S
	38	1.62	S
	40	1.79	S
	45	2.24	S
	50	2.74	S
	65	4.55	S
	70	5.25	S
	75	6.00	S
	80	6.81	S
	85	7.66	S
	90	8.57	S



Colours:

White, Black, Blue, Grey and Yellow
Other colours available on request

For further dimensions, please contact us directly.

PPSU MG

Product Charts

Sheets



SHEETS PPSU MG	Thickness mm	Weight kg/item	Avail- ability
1250 X 620 mm	3	4.02	S
	10	11.05	S
	12	13.06	S
	15	16.07	S
	20	21.10	S
	25	26.12	S
	30	31.14	S
	35	36.16	S
	40	41.19	S
	50	51.23	S
	55	56.26	S



Colours:

Natural(brownish), black, white, blue, red
Other colours available on request

Round Bars



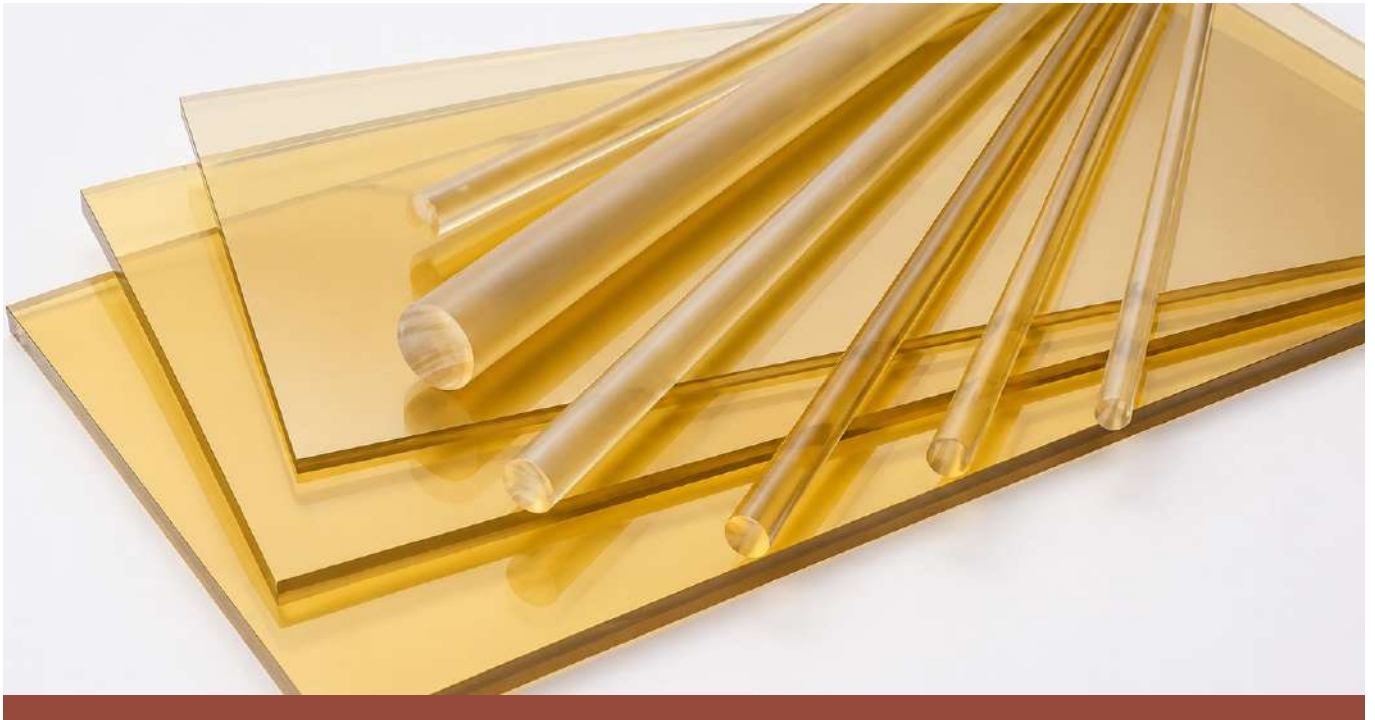
ROUND BARS PPSU MG	Ø mm	Weight kg/item L = 1000 mm	Avail- ability
	15	0.01	S
	20	0.02	S
	25	0.04	S
	30	0.05	S
	32	0.07	S
	35	0.10	S
	38	0.11	S
	40	0.16	S
	45	0.19	S
	50	0.25	S
	65	0.28	S
	70	0.36	S
	75	0.43	S
	80	0.54	S
	85	0.67	S
	90	0.75	S



Colours:

White, Black, Blue, Grey and Yellow
Other colours available on request

For further dimensions, please contact us directly.



Our PSU (Polysulfone)

Polysulfone (PSU) is a high-performance thermoplastic known for its heat resistance, chemical resistance, and dimensional stability, making it suitable for various applications. It's a translucent material with a slight amber or yellowish tint and is often used in food handling equipment, lab equipment, and chemical processing equipment.

Application of PSU:

- Food handling equipment
- Laboratory and Medical Devices
- Aerospace
- Membrane Housing & Water Filtration

Characteristics:

- High heat resistance
- Creep Resistance
- Radiation Resistance
- Chemical Resistance
- Sterilization Resistance
- Dimensional Stability

PSU

Product Charts

Sheets



SHEETS PSU	Thickness mm	Weight kg/item	Avail- ability
1250 x 620 mm	10	10.62	S
	15	15.45	S
	20	20.28	S
	25	25.11	S
	30	29.93	S
	35	34.76	S
	40	39.59	S
	45	44.42	S
	50	49.25	S



Colours:

Natural

Other colours available on request

For further dimensions, please contact us directly.

Round Bars



ROUND BARS PSU	Ø mm	Weight kg/item L = 1000 mm	Avail- ability
	20	0.47	S
	25	0.71	S
	30	1.00	S
	35	1.33	S
	40	1.72	S
	45	2.15	S
	50	2.63	S
	55	3.16	S
	60	3.74	S
	65	4.37	S
	70	5.05	S
	75	5.77	S
	80	6.55	S
	85	7.37	S
	90	8.24	S



POLYIMIDE

Product Information



POLYIMIDE – Super Engineering Plastic

Polyimide is a high-performance polymer known for its exceptional thermal stability, chemical resistance, and mechanical strength. It maintains its physical integrity across a wide temperature range (typically from -269°C to +400°C), making it ideal for demanding industrial, aerospace, and electronics applications.

Polyimide films and resins are lightweight, flame-retardant, and electrically insulating, making them suitable for use in flexible printed circuits, insulation layers, high-temperature adhesives, and various automotive components.

Areas of application for POLYIMIDE:

- Electronics and Electrical Engineering
- Aerospace and Aviation engineering
- Automotive
- Medical Devices
- Machinery and heavy machinery industries
- Optoelectronics and photonics

Characteristics:

- Heat resistant
- Robust
- Resistant to wear
- Stable friction level
- Perfect insulation
- Good processability

POLYIMIDE

Product Information

POLYIMIDE – variants

Polyimide N Polyimide natural (color dark brownish)

Unfilled base grade with highest purity, excellent electrical insulation, and outstanding chemical resistance.

Compositions:

- (equivalent: Plavis-N, Vespel SP-1, Meldin 4001)
-

Polyimide G15

15% graphite-filled, self-lubricating, with very good wear and friction properties.

Compositions:

- (equivalent: Plavis-G15, Vespel SP-21, Meldin 5021)
-

Polyimide G40

40% graphite-filled for maximum dimensional stability and ultra-low thermal expansion.

Compositions:

- (equivalent: Plavis-G40, Vespel SP-22)
-

Polyimide MoS

15% molybdenum disulfide (MoS₂), dry-running, suitable for vacuum or dry environments.

Compositions:

- (equivalent: Plavis-MS, Vespel SP-3, Meldin 5310)
-

Polyimide ESD

Electrostatic dissipative grade with controlled surface resistivity, ideal for electronics applications.

Compositions:

- (equivalent: Plavis-ESD, Meldin 7001-ESD)



POLYIMIDE – Super Engineering Plastic

POLYIMIDE

Product Charts

Sheets



SHEETS POLYIMIDE	Thickness mm	Weight kg/item	Avail- ability
360 x 320 mm	1	0.16	S
	3	0.49	S
	5	0.82	S
	10	1.65	S
	15	2.47	S
	20	3.29	S
	25	4.12	S
	40	6.59	S
	50	8.24	S

SHEETS POLYIMIDE	Thickness mm	Weight kg/item	Avail- ability
1020 X 320 mm	3	1.40	S
	4	2.40	S
	5	2.70	S
	6	2.90	S
	7	3.40	S
	8	2.90	S
	9	4.40	S
	10	5.10	S
	11	5.70	S
	12	6.10	S
	13	7.10	S
	20	9.40	MTO
	25	11.70	MTO
	30	14.10	MTO
	50	23.40	MTO
	70	32.80	MTO
90	42.00	S	

Round Bars



ROUND BARS POLYIMIDE	Ø mm	Weight kg/item L = 1000 mm	Avail- ability
	2	0.00022	S
	6.35	0.00226	S
	9.5	0.05	S
	11.1	0.07	S
	12.7	0.09	S
	15.8	0.14	S
	19.1	0.204	S
	25.4	0.36	S
	38.1	0.81	S
	45	1.135	S
	50.8	1.445	S
	60	2.02	S
	85	4.055	S

Colours:

Natural (dark brownish)

Other colours available on request

For further dimensions, please contact us directly.



COMCOEPP

Engineering Plastic Products

We produce plastic stock shapes
and engineer tailor made solutions.



COMCOEPP
Engineering Plastic Products

Comco EPP GmbH (AT)

info@comco-epp.com

COMCONYLON
High Performance in Plastics

Comco Nylon GmbH (DE)

info@comco-nylon.com

COMCOEPP
Engineering Plastic Products

Comco EPP Middle East
FZCO (AE)

sales@comco-epp.ae

COMCOEPP
Engineering Plastic Products

Comco EPP East Asia &
PI Division (KR)

sales@comco-epp.kr